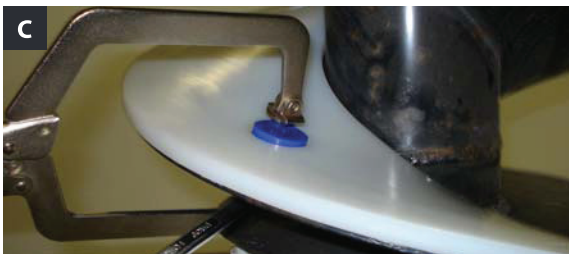


UHMW WearShoes

INSTALLATION INSTRUCTIONS

PLEASE READ THE ENTIRE INSTRUCTION SHEET BEFORE STARTING INSTALLATION.

Please refer to the manufacturer's operator's manual for pertinent safety precautions. **THINK SAFETY. WEAR SAFETY GLASSES.**



UHMW WearShoes
Installation Instructions

1. Line up the leading edge of the wearshoe with the starting edge of the steel flight and apply the clamp. If you start at the bottom edge, you can slide the wearshoe down so the bolt is closer to the bottom - just cut off the excess later.
2. Work your way along the wearshoe, pushing it onto the steel flight and clamp as needed, keeping it tight to the center tube. Tap the outside of the wearshoe with a hammer to move it while it is clamped. Trim the wearshoe on the back inside edge if there is a weld on the top of the steel flight. This will help it fit closer to the steel flight.
3. When the wearshoe is in place, use a center punch or marker to mark the holes to be drilled. (as shown in photo A)
4. Remove the wearshoe and drill the holes with a minimum 5/16" bit. You can make the holes a little bigger so adjustments are easier. A torch or plasma cutter can also be used to cut the holes. (as shown in photo B)
5. Re-clamp the wearshoe, lining up the holes and install the bolts. (as shown in photo C)
6. All bolts can be tightened except for the one closest to the next joint. Leave this bolt loose until the next wearshoe is installed.
7. Position the next wearshoe against the bolted one. Clamp as needed. Tap the wearshoes together to make a tight fitting joint.
8. Extra length at the end can be trimmed with a sawzall or hacksaw. (as shown in photo D)
9. The small stainless steel cap screws are used at the bottom outside edge of the first or lower wearshoe. Use this screw to secure the bottom outside edge, so no grain can work under the wearshoe. (as shown in photo E)

WARNING Proper application, installation and operation of any machine and/or installation incorporating products sold by May Wes Mfg. is the responsibility of the purchaser and/or end user. All local, state and federal safety codes must be followed. May Wes Mfg. is specifically not responsible for property damage and/or personal injury, direct or indirect, for damages and/or failures caused by improper design, application, installation, operation, abuse and/or misuse of its' products. Conveyors must never be installed, readied for operation, or operated without proper covers and guards installed and securely in place.



1-800-788-6483