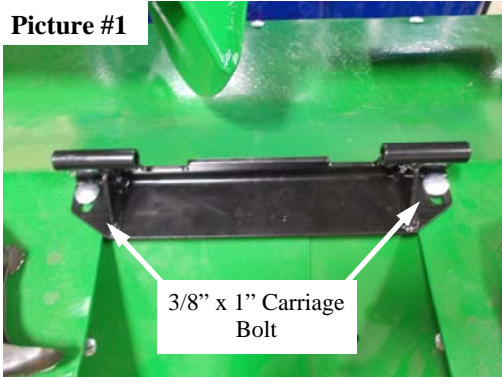




The Original Farmer Designed
59711 U.S. Hwy 12, Litchfield, MN 55355
1-888-485-8411

Assembly Instructions GVL II—Case IH 800 Series 30" Center (CI 83025)

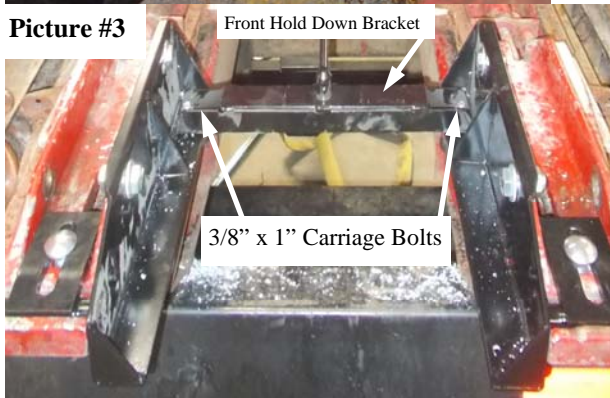
Picture #1



Picture #2



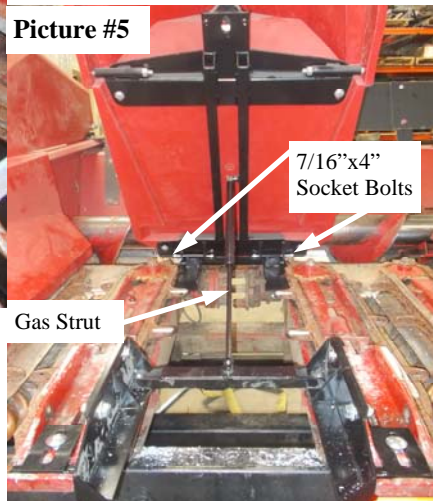
Picture #3



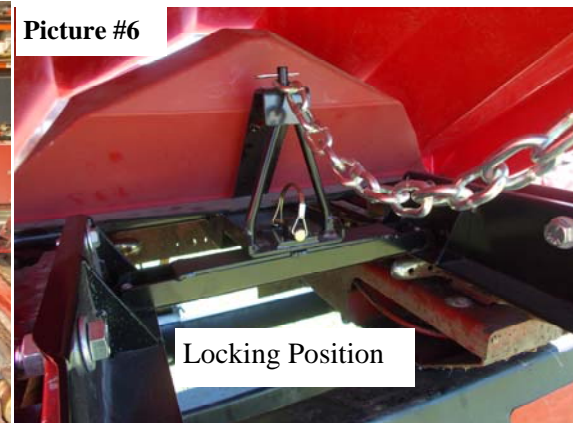
Picture #4



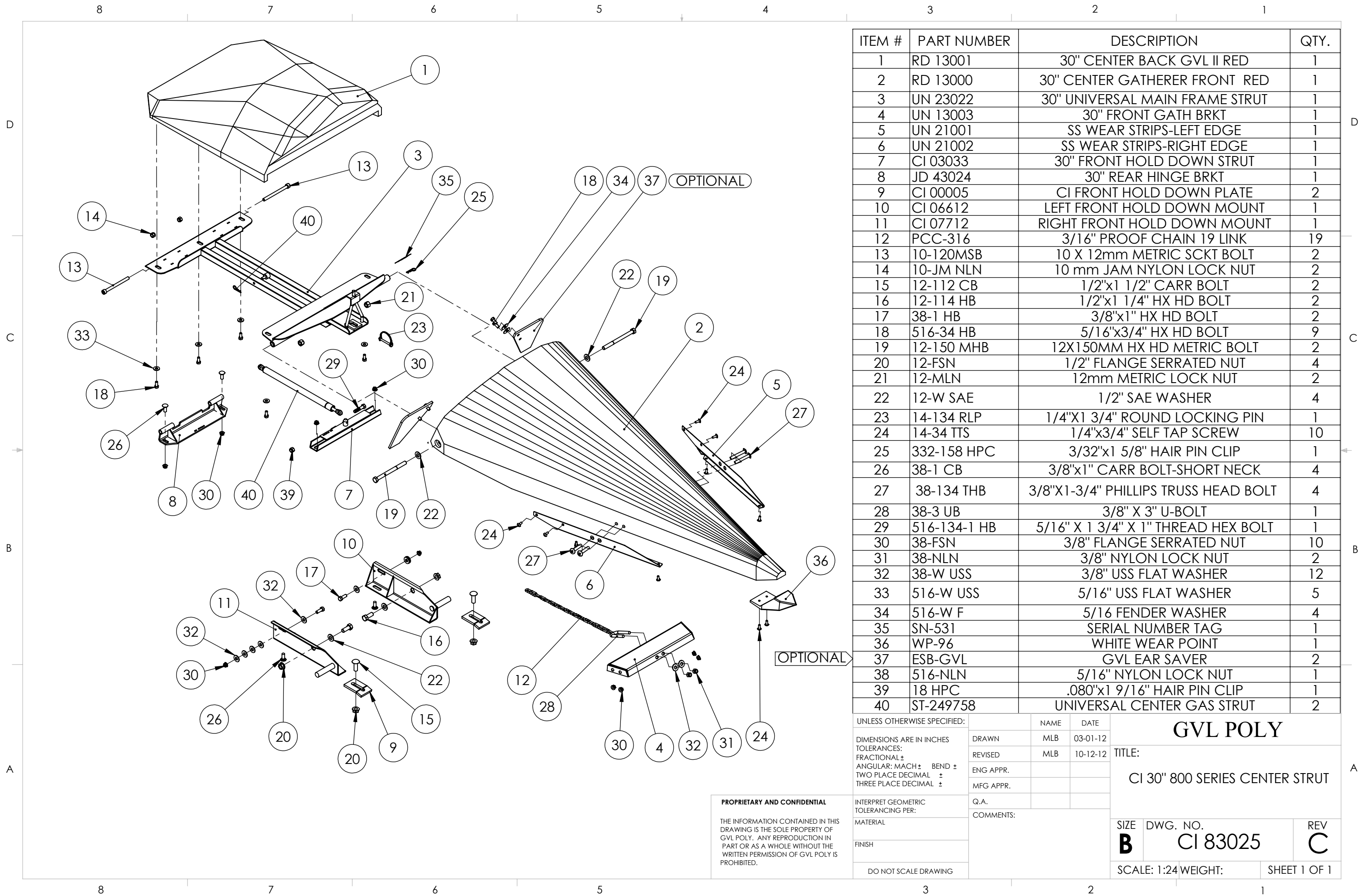
Picture #5



Picture #6



1. Remove metal Gatherer Shields.
2. Remove all hinges, brackets, latches and support rods.
3. Install the Rear Hinge Bracket. Using the existing Phillips counter sunk bolts and nuts near the chain sprocket, attach the front part of the mount. Attach the rear with the 3/8" x 1" carriage bolts and nuts provided. **(Picture #1)** Use the 3/8" washers (Not provided), to shim the rear hinge out as needed. **(Picture #2)** Square the rear hinging bracket using a tape measure.
4. Install the Left and Right Front Hold Down Mounts to the front cast pieces, using 1/2" x 1 1/2" Carriage bolts, 1/2" flanged serrated nuts and the Front Hold Down Plate. **(Picture # 3)**
5. Bolt the Front Hold Down Mount with the 1/2" x 1 1/4" hex head bolt and 1/2" flanged serrated nuts to the cast piece. **(Picture #3)**
6. Drill a 3/8" hole through the front cast at the rear of the slot of the front mounting bracket. Bolt the rear of the cast with a 3/8" x 1" hex bolt, washer and flanged serrated nut.
7. Mount the Front Hold Down Bracket using 3/8" x 1" carriage bolts, washers and Flanged serrated nuts. (Leave Loose) **(Picture #3 & #4)**
8. Place the unit on the head and install the 7/16" x 4" rear Hinge Socket Bolts with the 7/16" Top Lock Nut toward the center. **(Picture #5)**
9. Fasten the Gas Strut in the slotted bracket using the 5/16" x 1-3/4" Bolt on the Front Hinge Bracket. Remove the round lock pin. Lower the unit and tighten the 3/8" carriage bolts on the Front Hold Down Bracket. Lock the unit down with the round lock pin. **(Picture #6)**
11. **Check to make sure the drive clutch does not touch any bolts or pins.**
12. **Tighten all bolts and nuts.**
13. Remove PVP pipe that is around the adjustment chain. (For shipping purposes only.)



ITEM #	PART NUMBER	DESCRIPTION	QTY.
1	RD 13001	30" CENTER BACK GVL II RED	1
2	RD 13000	30" CENTER GATHERER FRONT RED	1
3	UN 23022	30" UNIVERSAL MAIN FRAME STRUT	1
4	UN 13003	30" FRONT GATH BRKT	1
5	UN 21001	SS WEAR STRIPS-LEFT EDGE	1
6	UN 21002	SS WEAR STRIPS-RIGHT EDGE	1
7	CI 03033	30" FRONT HOLD DOWN STRUT	1
8	JD 43024	30" REAR HINGE BRKT	1
9	CI 00005	CI FRONT HOLD DOWN PLATE	2
10	CI 06612	LEFT FRONT HOLD DOWN MOUNT	1
11	CI 07712	RIGHT FRONT HOLD DOWN MOUNT	1
12	PCC-316	3/16" PROOF CHAIN 19 LINK	19
13	10-120MSB	10 X 12mm METRIC SCKT BOLT	2
14	10-JM NLN	10 mm JAM NYLON LOCK NUT	2
15	12-112 CB	1/2"x1 1/2" CARR BOLT	2
16	12-114 HB	1/2"x1 1/4" HX HD BOLT	2
17	38-1 HB	3/8"x1" HX HD BOLT	2
18	516-34 HB	5/16"x3/4" HX HD BOLT	9
19	12-150 MHB	12X150MM HX HD METRIC BOLT	2
20	12-FSN	1/2" FLANGE SERRATED NUT	4
21	12-MLN	12mm METRIC LOCK NUT	2
22	12-W SAE	1/2" SAE WASHER	4
23	14-134 RLP	1/4"X1 3/4" ROUND LOCKING PIN	1
24	14-34 TTS	1/4"x3/4" SELF TAP SCREW	10
25	332-158 HPC	3/32"x1 5/8" HAIR PIN CLIP	1
26	38-1 CB	3/8"x1" CARR BOLT-SHORT NECK	4
27	38-134 THB	3/8"X1-3/4" PHILLIPS TRUSS HEAD BOLT	4
28	38-3 UB	3/8" X 3" U-BOLT	1
29	516-134-1 HB	5/16" X 1 3/4" X 1" THREAD HEX BOLT	1
30	38-FSN	3/8" FLANGE SERRATED NUT	10
31	38-NLN	3/8" NYLON LOCK NUT	2
32	38-W USS	3/8" USS FLAT WASHER	12
33	516-W USS	5/16" USS FLAT WASHER	5
34	516-W F	5/16" FENDER WASHER	4
35	SN-531	SERIAL NUMBER TAG	1
36	WP-96	WHITE WEAR POINT	1
37	ESB-GVL	GVL EAR SAVER	2
38	516-NLN	5/16" NYLON LOCK NUT	1
39	18 HPC	.080"x1 9/16" HAIR PIN CLIP	1
40	ST-249758	UNIVERSAL CENTER GAS STRUT	2

UNLESS OTHERWISE SPECIFIED:

DRAWN	NAME	DATE
REVISED	MLB	03-01-12
ENG APPR.	MLB	10-12-12
MFG APPR.		
Q.A.		
COMMENTS:		

PROPRIETARY AND CONFIDENTIAL

THE INFORMATION CONTAINED IN THIS DRAWING IS THE SOLE PROPERTY OF GVL POLY. ANY REPRODUCTION IN PART OR AS A WHOLE WITHOUT THE WRITTEN PERMISSION OF GVL POLY IS PROHIBITED.

INTERPRET GEOMETRIC TOLERANCING PER:

MATERIAL

FINISH

DO NOT SCALE DRAWING

GVL POLY

TITLE:
CI 30" 800 SERIES CENTER STRUT

SIZE	DWG. NO.	REV
B	CI 83025	C

SCALE: 1:24 WEIGHT: SHEET 1 OF 1