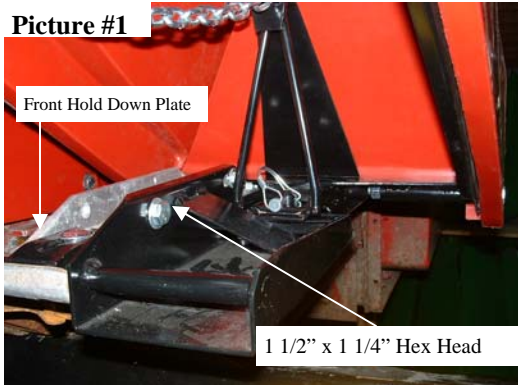




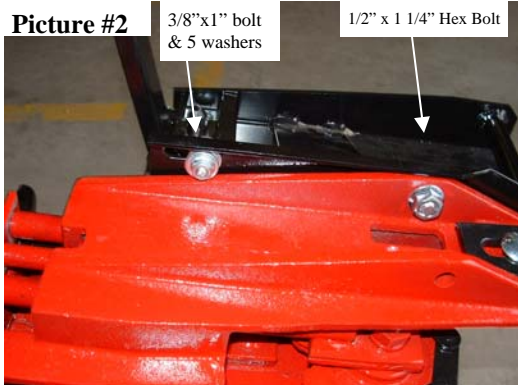
The Original Farmer Designed
 59711 U.S. Hwy 12, Litchfield, MN 55355
 1-888-485-8411

Assembly Instructions GVL II—Case IH 800 Series 20 Left End (CI 81115L-S or CI 81115H-S)

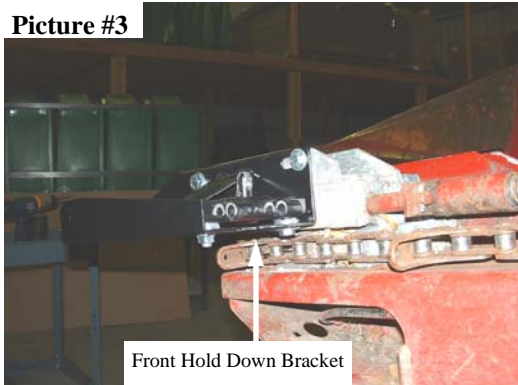
Picture #1



Picture #2



Picture #3

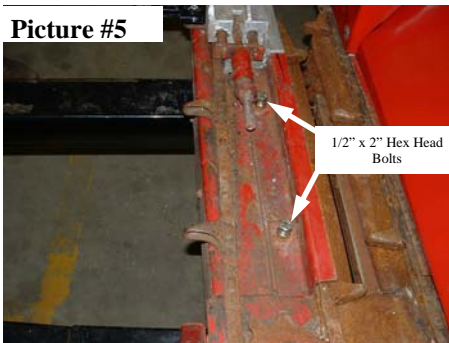


Picture #4

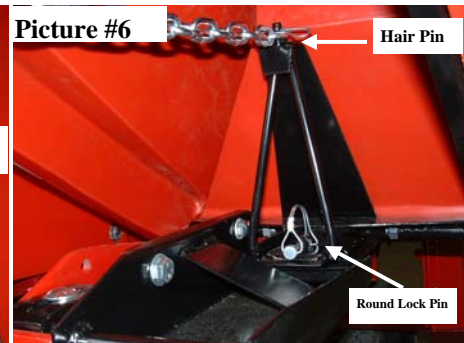


1. Remove the old metal Gatherer and back angle bracket (keep angle bracket for later use)
2. Install the Left Front Hold Down Mounts to the front cast pieces, using 1/2" x 1 1/2' Carriage bolts, 1/2" flanged serrated nuts and Front Hold Down Plate. **(Picture #1)**
3. Bolt the Front Hold Down Mount with the 1/2" x 1 1/4" hex head bolt, washers, and 1/2" flanged serrated nuts to the cast piece. Level with row unit and tighten. **(Picture #1)**
4. Place the 3/8" x 1" bolt through the slotted hole in rear of the mount with five washers on top of the cast **(Picture #2)**, put the nut on and push forward and tighten the nut.
5. Mount the Front Hold Down Bracket using a 3/8" x 1" Carriage bolt, washers and nuts. (Leave loose) **(Picture #3)**
6. Mount Lower Support Bracket. **(Picture #4)**
7. Replace the 1/2" x 3 1/2" chain guard/ stripper plate bolts with 1/2" x 2" Hex Bolt. (Provided) **(Picture #5)**
8. Place the assembled unit on the end, so the front hold-down pin goes through the front hole on the frame and place the round lock pin through the hole in the pin. **(Picture #6)**

Picture #5



Picture #6

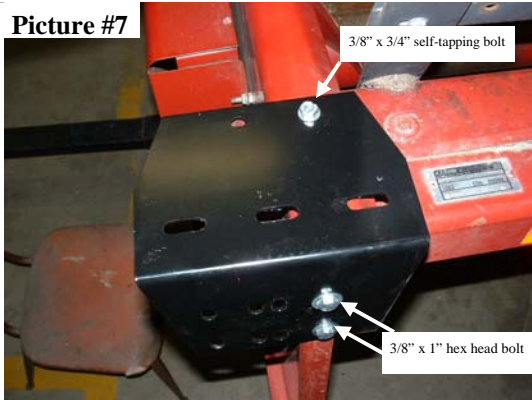




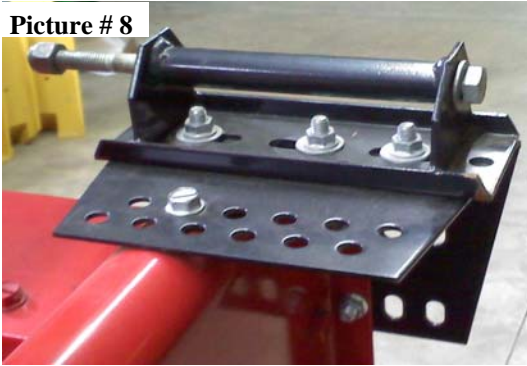
The Original Farmer Designed
59711 U.S. Hwy 12, Litchfield, MN 55355
1-888-485-8411

Assembly Instructions GVL II—Case IH 800 Series 20 Left End (CI 81115L-S or CI 81115H-S)

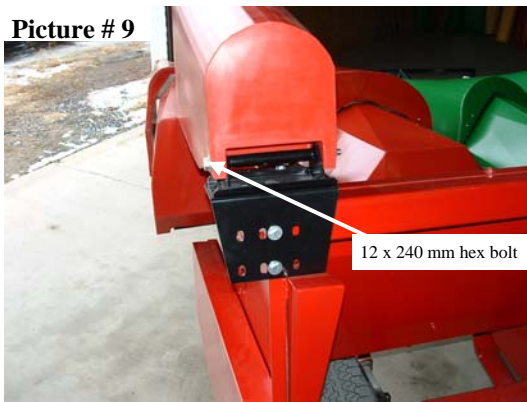
Picture #7



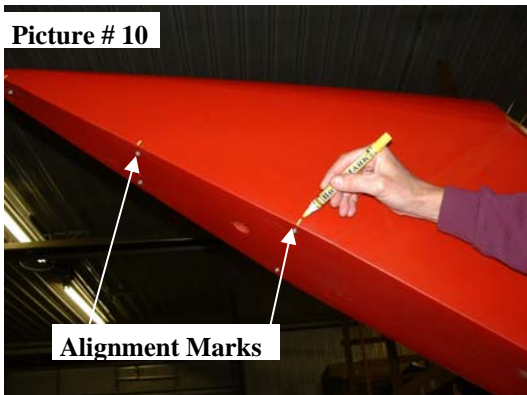
Picture #8



Picture #9



Picture #10



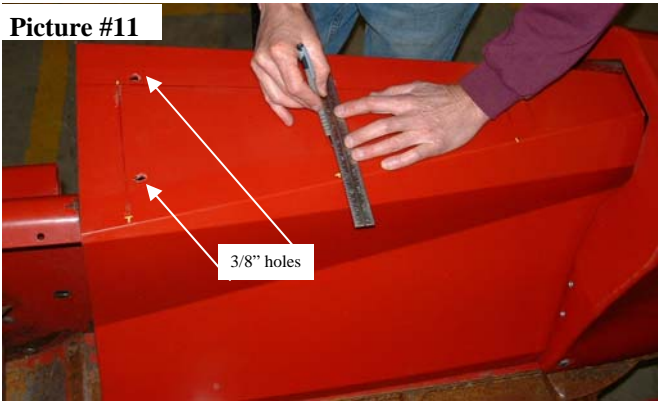
9. Attach the multi position Rear Hinge Mount to the back the head and use the holes to align for the best fit. Mark and drill the rear holes using a 3/8" bit. (Top Hole is existing 5/16" hole) Use a 3/8" x 1" hex bolt, washers and nuts on the back. (Leave loose) Position The top hole of the bracket over the top center of the head end roll and drill a 5/16" hole. Fasten using the 3/8" x 3/4" self tapping bolt. Tighten all bolts. **(Picture #7)**
10. Using the 12 x 240 mm bolt, two washers, and a 12 mm nut, mount the hinge to the low or high rear extension. **(Picture #9)**
11. Bolt the High or Low Rear Extension to the rear hinge mount using 3/8" x 1" carriage bolts, washers and nuts placing the rear fender and rear extension in the proper position. Tighten the carriage bolts. **(Picture #9)**
12. Locate the six alignment marks on the rear extension. (Marks should be located directly across from the center of the molded in nuts.) **(Picture #10)**
13. While lifting up on the rear fender, slide the gatherer back tight against the head and position it side to side in the preferred position.
14. Mark the top of the rear fender by the six rear extension alignment marks.
15. Prop the low or high rear extension up out of the way.



The Original Farmer Designed
59711 U.S. Hwy 12, Litchfield, MN 55355
1-888-485-8411

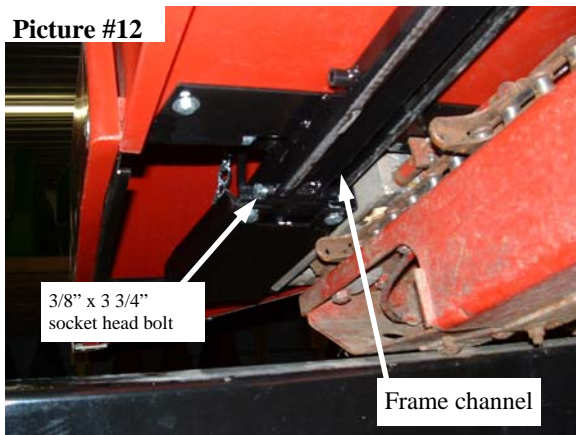
Assembly Instructions GVL II—Case IH 800 Series 20 Left End (CI 81115L-S or CI 81115H-S)

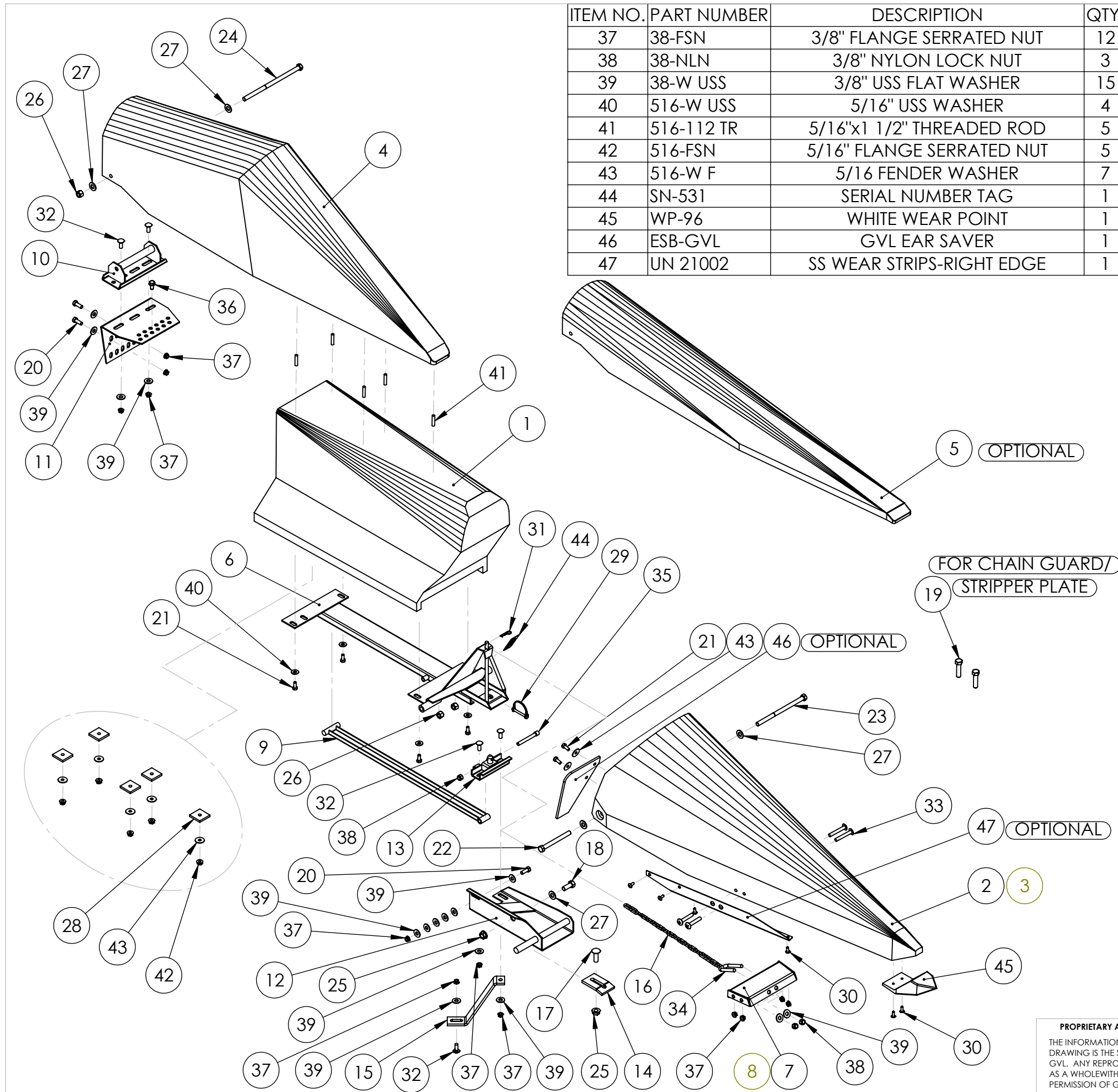
Picture #11



16. Draw a straight line between the marks on the gatherer shield. **(Picture #11)**
17. Measure the distance from the outside of the extension to the center of the molded in nuts. Transfer that measurement to match the lines on the gatherer shield.
18. Drill 3/8" holes into the rear fender, matching them with the molded nuts in the end extension.
19. Thread the 5/16" x 1 1/2" threaded rods into the molded nuts within the extension. Snug the threaded rods in with a pliers.
20. Lower the rear extension and place the threaded Rods through the drilled holes.
21. Put the plastic washers, fender washers and flanged serrated nuts on by putting your arm through the hole under the rear fender.
22. Tighten all nuts on the extension.
23. In the down position, install the prop rod from the under side. (T- end in the frame channel and use 3/8" x 3 3/4" socket head bolt and nylon lock nut. (Tighten the nut.) **(Picture #12)**
24. Tap the front hold down bracket forward, so the 5/8" Pin is to the front of the slotted hole in the frame and tighten the 3/8" carriage bolts and nuts.
25. Remove the PVC pipe that is around the adjustment chain. (For shipping and handling only!)
26. Check and tighten all bolts and nuts.

Picture #12





ITEM NO.	PART NUMBER	DESCRIPTION	QTY.
37	38-FSN	3/8" FLANGE SERRATED NUT	12
38	38-NLN	3/8" NYLON LOCK NUT	3
39	38-W USS	3/8" USS FLAT WASHER	15
40	516-W USS	5/16" USS WASHER	4
41	516-112 TR	5/16"x1 1/2" THREADED ROD	5
42	516-FSN	5/16" FLANGE SERRATED NUT	5
43	516-W F	5/16" FENDER WASHER	7
44	SN-531	SERIAL NUMBER TAG	1
45	WP-96	WHITE WEAR POINT	1
46	ESB-GVL	GVL EAR SAVER	1
47	UN 21002	SS WEAR STRIPS-RIGHT EDGE	1

ITEM NO.	PART NUMBER	DESCRIPTION	QTY.
1	RD 11111	20's END LEFT BACK SHORT-NH YELLOW	1
2	RD 11100-S	20's LEFT END SHORT RED	1
3	RD 11100	20's LEFT END LONG RED	1
4	RD 06714	HIGH END EXTENSION	1
5	RD 06714-L	LOW END EXTENSION	1
6	UN 01122	LEFT END 20's MAIN FRAME UNI.	1
7	UN 11403-S	END FRONT GATH BRKT-20-SHORT	1
8	UN 11403	END FRONT GATH BRKT-20-LONG	1
9	UN 00007	UNIVERSAL PROP ROD	1
10	CI 01467	CI UNIVERSAL REAR HINGE	1
11	CI 01647	CI REAR HINGE MOUNT	1
12	CI 01632	LE FRT HOLD DN MOUNT GVLII	1
13	CI 02222	22" FRONT HOLD DOWN BRACKET	1
14	CI 00005	CI FRONT HOLD DOWN PLATE	1
15	CI 81467	LOWER FRONT END SUPPORT	1
16	PCC-316	3/16" PROOF CHAIN 2T LINK	1
17	12-112 CB	1/2"x1 1/2" CARR BOLT	1
18	12-114 HB	1/2"x1 1/4" HX HD BOLT	1
19	12-2 HB	1/2"x2" HEX HEAD BOLT	2
20	38-1 HB	3/8"x1" HX HD BOLT	3
21	516-34 HB	5/16"x3/4" HX HD BOLT	6
22	12-120 MHB	12MM X 120MM METRIC HEX HEAD BOLT	1
23	12-200 MHB	12x240 HX HD METRIC BOLT	1
24	12-240 MHB	12x240 HX HD METRIC BOLT	1
25	12-FSN	1/2" FLANGE SERRATED NUT	2
26	12-MLN	12mm METRIC LOCK NUT	3
27	12-W SAE	1/2" SAE WASHER	5
28	14-134 PW	1/4"x1 3/4"x1 3/4" PLASTIC	5
29	14-134 RLP	1/4"x1 3/4" ROUND LOCKING PIN	1
30	14-34 TTS	1/4"x3/4" SELF TAP SCREW	6
31	332-158 HPC	3/32"x1 5/8" HAIR PIN CLIP	1
32	38-1 CB	3/8"x1" CARR BOLT-SHORT NECK	5
33	38-134 THB	3/8" X 1-3/4" PHILLIPS TRUSS HEAD BOLT	4
34	38-3 UB	3/8" X 3" U-BOLT	1
35	38-334 SHCS	3/8" X 3-3/4" SOCKET HEAD CAP SCREW	1
36	38-34 HWH	3/8"x 3/4" SELF TAP HEX HB	1

5 OPTIONAL

FOR CHAIN GUARD/
STRIPPER PLATE

19

21 43 46 OPTIONAL

47 OPTIONAL

2 3

8 7

	NAME	DATE
DRAWN	ALS	3/14/08
REVISED	MLB	11-16-12
ENG APPR.		
MFG APPR.		
Q.A.		
COMMENTS:		

GVL POLY

TITLE:
CI 800 20's LEFT END GVL II

SIZE B	DWG. NO. CI 81115H CI 81115H-S CI 81115L-S	REV A
------------------	--	-----------------

SCALE: 1:13 WEIGHT: SHEET 1 OF 1

PROPRIETARY AND CONFIDENTIAL
THE INFORMATION CONTAINED IN THIS DRAWING IS THE SOLE PROPERTY OF GVL. ANY REPRODUCTION IN PART OR AS A WHOLE WITHOUT THE WRITTEN PERMISSION OF GVL IS PROHIBITED.