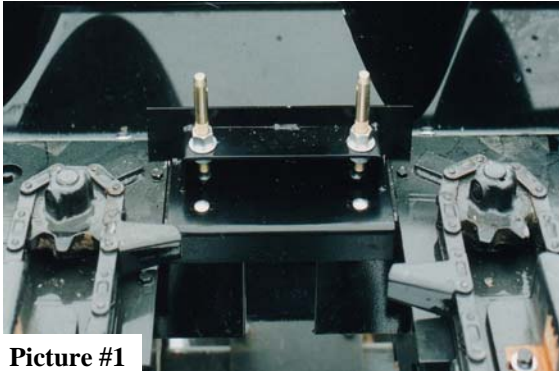


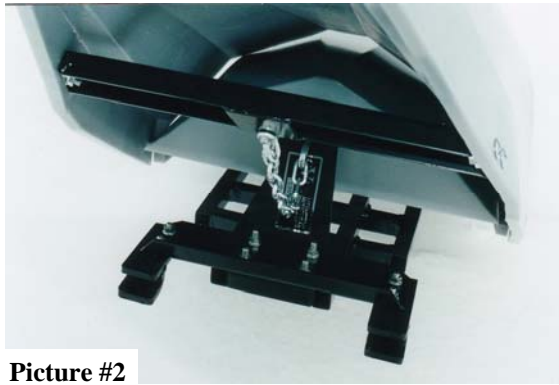


The Original Farmer Designed  
59711 U.S. Hwy 12, Litchfield, MN 55355  
1-888-485-8411

## Assembly Instructions AGCO HUGGER 30"-38" Center (H 3023, H 3623, H 3823)



1. Remove filler plate between the row units and replace with **GVL** rear hold-down bracket (**Item #8**) using (4) 5/16" x 3/4" carriage bolts and nuts. Center and tighten (Picture #1)

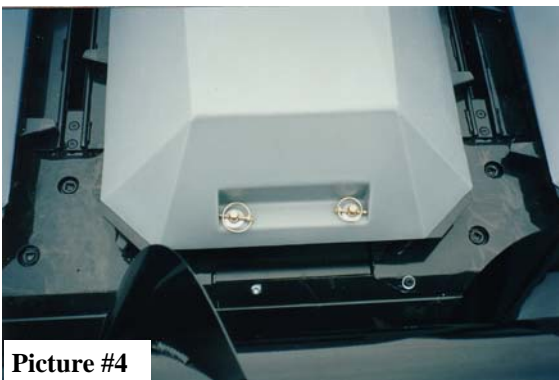


2. Install the front hinge bracket (**Item #9**) to the front of the **GVL** main frame (**Item #3**) using 3/8" x 1" carriage bolts and nuts provided. Leave loose



3. Install the hooks (**Item #10**) on the front hinge bracket using 3/8" x 1" carriage bolts and nut provided. Leave loose (Picture #2)

4. Set the **GVL** Gatherer Shields in place inserting the hook end first. (**Picture #3**) Next tilt the back down through the rear hold-down pins. (**Item #28**) The pins are tapered to self align. (**Picture #4**)

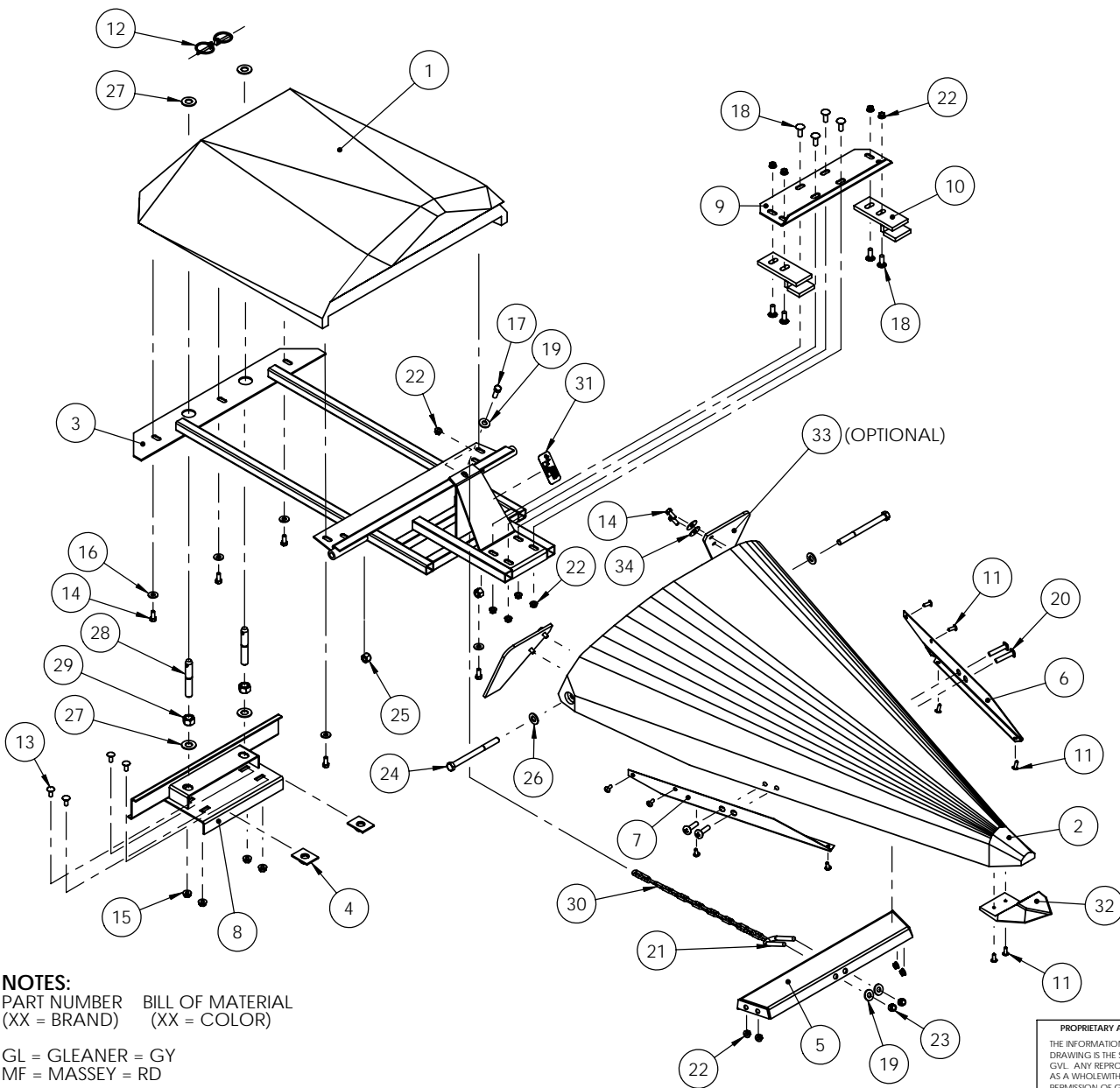


5. Position the Gatherer Shield and tighten the bolts.

6. Adjust the rear hold-down pins up or down so the lynch pins (**Item #12**) are snug (**The 5/8" washers are for under the lynch pins**), then tighten hold-down pin nuts. (**Picture #4**)

7. The PVC pipe around the adjustment chain. Must be removed. (For shipping only)

8. Use extra 1/4" x 3/4" screws and fender washer to fasten the rubber ear savers. (**Optional**) (Drill holes no larger than 1/8" holes for this).



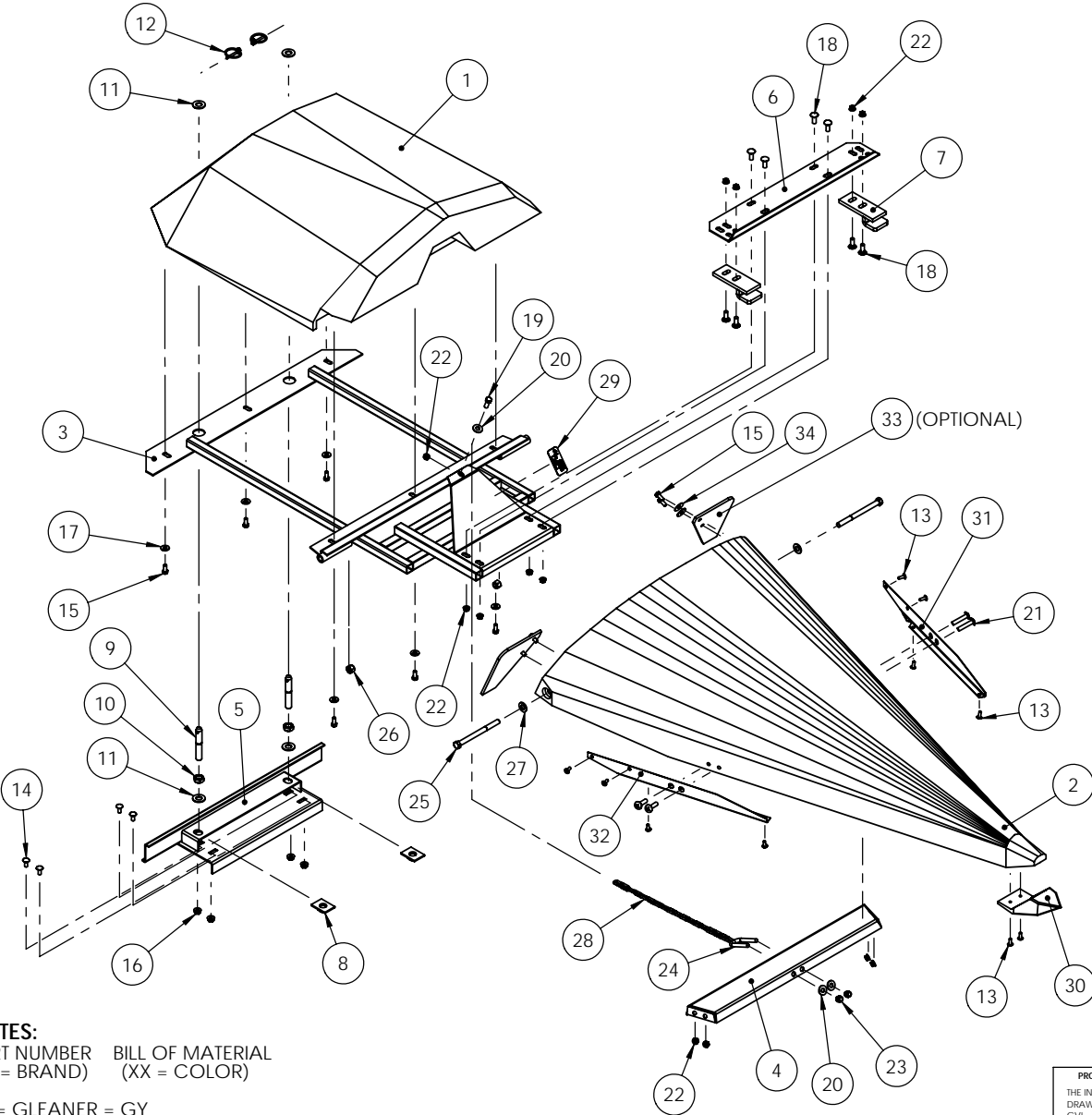
**NOTES:**  
 PART NUMBER BILL OF MATERIAL  
 (XX = BRAND) (XX = COLOR)

GL = GLEANER = GY  
 MF = MASSEY = RD

| ITEM NO. | PART NUMBER | DESCRIPTION                  | QTY. |
|----------|-------------|------------------------------|------|
| 1        | XX 03001    | 30" CENTER BACK              | 1    |
| 2        | XX 13000    | 30" CENTER GATHERER FRONT    | 1    |
| 3        | DA 13002    | 30" MAIN FRAME               | 1    |
| 4        | UN 00006    | 5/8" JAM NUT PLATE           | 2    |
| 5        | UN 13003    | 30" FRONT GATH BRKT          | 1    |
| 6        | UN 21001    | SS WEAR SRTIPS-LEFT EDGE     | 1    |
| 7        | UN 21002    | SS WEAR SRTIPS-RIGHT EDGE    | 1    |
| 8        | DA 03004    | 30" REAR HOLD DN BRKT        | 1    |
| 9        | DA 03012    | 30" FRT HINGING BRKT         | 1    |
| 10       | DA 00009    | HOOK-HUGGER SERIES           | 2    |
| 11       | 14-34 TTS   | 1/4"x3/4" TR TAPPING SCREW   | 10   |
| 12       | 14-LP       | 1/4" LYNCH PIN               | 2    |
| 13       | 516-34 CB   | 5/16"x3/4" CARRAGE BOLT      | 4    |
| 14       | 516-34 HB   | 5/16"x3/4" HX HD BOLT        | 9    |
| 15       | 516-FSN     | 5/16" FLANGE SERRATED NUT    | 4    |
| 16       | 516-W USS   | 5/16" USS FLAT WASHER        | 5    |
| 17       | 38-1 HB     | 3/8"x1" HX HD BOLT           | 1    |
| 18       | 38-1 CB     | 3/8"x1" CARR BOLT-SHORT NECK | 8    |
| 19       | 38-W USS    | 3/8" USS FLAT WASHER         | 3    |
| 20       | 38-134 THB  | 3/8"x1 3/4" TRUSS HEAD BOLT  | 4    |
| 21       | 38-3 UB     | 3/8"x3" U-BOLT               | 1    |
| 22       | 38-FSN      | 3/8" FLANGE SERRATED NUT     | 13   |
| 23       | 38-NLN      | 3/8" NYLON LOCK NUT          | 2    |
| 24       | 12-150 MHB  | 12X150 HX HD METRIC BOLT     | 2    |
| 25       | 12-MLN      | 12 METRIC LOCK NUT           | 2    |
| 26       | 12-W SAE    | 1/2" SAE WASHER              | 2    |
| 27       | 58-W SAE    | 5/8" SAE WASHER              | 4    |
| 28       | 58-4 HDP    | 5/8"x4" LG HOLD DOWN PIN     | 2    |
| 29       | 58-FTN      | 5/8" FINE THREAD NUT         | 2    |
| 30       | PCC-316     | 3/16" PROOF COIL CHAIN       | 19   |
| 31       | SN-531      | SERIAL NUMBER TAG            | 1    |
| 32       | WP-96       | Wear Point                   | 1    |
| 33       | ES-GVL      | GVL EAR SAVER                | 2    |
| 34       | 516-W F     | 5/16" FENDER WASHER          | 4    |

**PROPRIETARY AND CONFIDENTIAL**  
 THE INFORMATION CONTAINED IN THIS  
 DRAWING IS THE SOLE PROPERTY OF  
 GVL. ANY REPRODUCTION IN PART OR  
 AS A WHOLE WITHOUT THE WRITTEN  
 PERMISSION OF GVL IS PROHIBITED.

|           |      |         |   |                  |
|-----------|------|---------|---|------------------|
|           | NAME | DATE    | <b>GVL</b>                                |                  |
| DRAWN     | ALS  | 5/22/08 |   |                  |
| CHECKED   |      |         | TITLE:                                    |                  |
| ENG APPR. |      |         | <b>AGCO 30" CENTER<br/>- HUGGER GVL I</b> |                  |
| MFG APPR. |      |         | SIZE                                      | DWG. NO.         |
| Q.A.      |      |         | <b>B</b>                                  | <b>XX H 3023</b> |
| COMMENTS: |      |         | SCALE: 1:10                               | WEIGHT:          |
|           |      |         |   | SHEET 1 OF 1     |



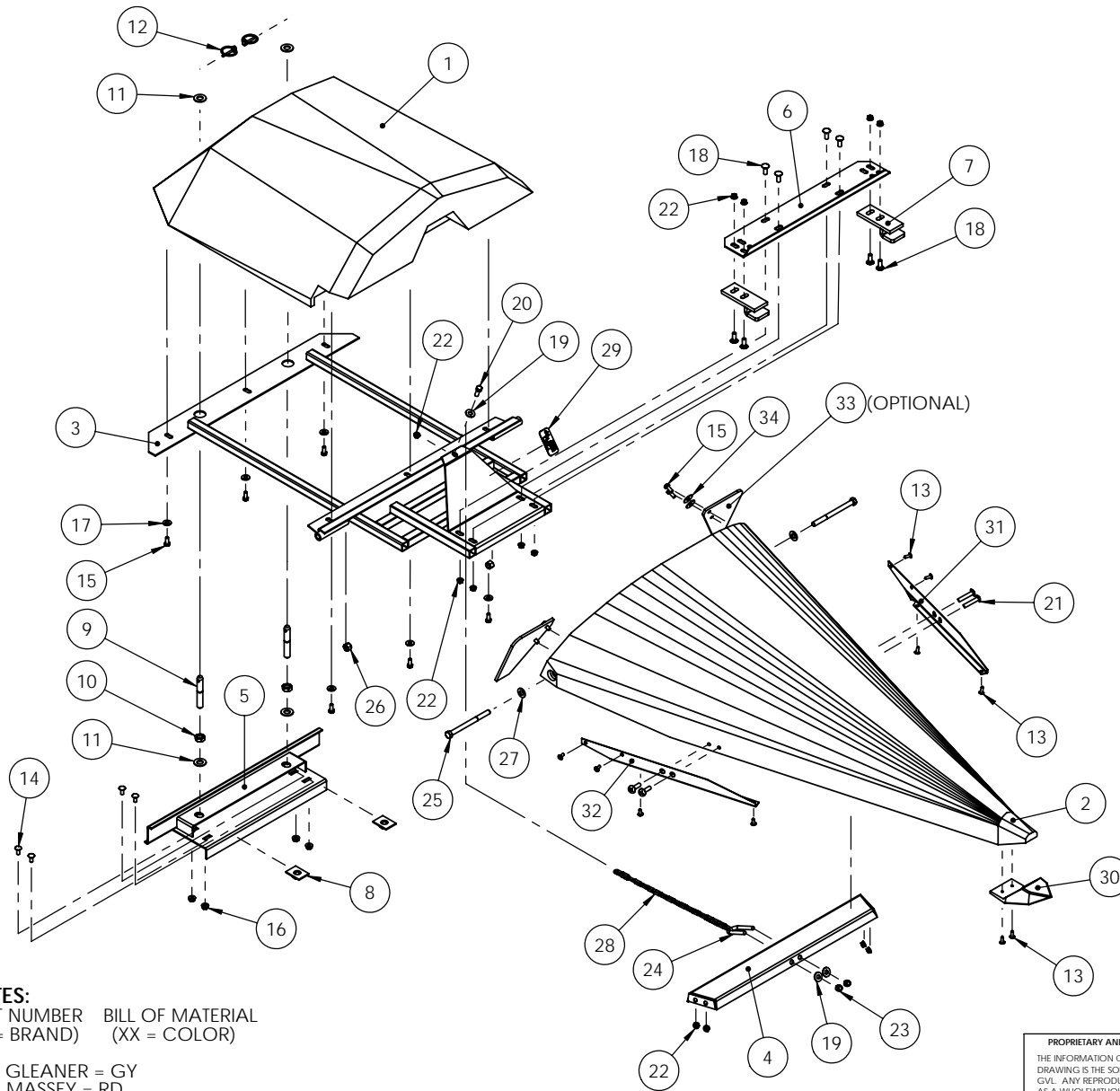
| ITEM NO. | PART NUMBER | DESCRIPTION                   | QTY. |
|----------|-------------|-------------------------------|------|
| 1        | XX 03701    | 36"/38" CENTER BACK           | 1    |
| 2        | XX 13700    | 36"/38" CENTER GATHERER FRONT | 1    |
| 3        | DA 13702    | 37" MAIN FRAME                | 1    |
| 4        | UN 13703    | 36"-38" FRONT GATH BRACKET    | 1    |
| 5        | DA 03604    | 36" REAR HOLD DOWN BRKT       | 1    |
| 6        | DA 03712    | 37" FRT HINGING BRKT          | 1    |
| 7        | DA 00009    | HOOK-HUGGER SERIES            | 2    |
| 8        | UN 00006    | 5/8" JAM NUT PLATE            | 2    |
| 9        | 58-4 HDP    | 5/8"x4" LG HOLD DOWN PIN      | 2    |
| 10       | 58-JN       | 5/8" JAM NUT                  | 2    |
| 11       | 58-W SAE    | 5/8" SAE WASHER               | 4    |
| 12       | 14-LP       | 1/4" LYNCH PIN                | 2    |
| 13       | 14-34 TTS   | 1/4"x3/4" TR TAPPING SCREW    | 10   |
| 14       | 516-34 CB   | 5/16"x3/4" CARRAGE BOLT       | 4    |
| 15       | 516-34 HB   | 5/16"x3/4" HX HD BOLT         | 10   |
| 16       | 516-FSN     | 5/16" FLANGE SERRATED NUT     | 4    |
| 17       | 516-W USS   | 5/16" USS FLAT WASHER         | 6    |
| 18       | 38-1 CB     | 3/8"x1" CARR BOLT-SHORT NECK  | 8    |
| 19       | 38-1 HB     | 3/8"x1" HX HD BOLT            | 1    |
| 20       | 38-W USS    | 3/8" USS FLAT WASHER          | 3    |
| 21       | 38-134 THB  | 3/8"x1 3/4" TRUSS HEAD BOLT   | 4    |
| 22       | 38-FSN      | 3/8" FLANGE SERRATED NUT      | 13   |
| 23       | 38-NLN      | 3/8" NYLON LOCK NUT           | 2    |
| 24       | 38-3 UB     | 3/8"x3" U-BOLT                | 1    |
| 25       | 12-150 MHB  | 12X150 HX HD METRIC BOLT      | 2    |
| 26       | 12-MLN      | 12 METRIC LOCK NUT            | 2    |
| 27       | 12-W SAE    | 1/2" SAE WASHER               | 2    |
| 28       | PCC-316     | 3/16 PROOF COIL CHAIN         | 19   |
| 29       | SN-531      | SERIAL NUMBER TAG             | 1    |
| 30       | WP-96       | Wear Point                    | 1    |
| 31       | UN 21001    | SS WEAR SRTIPS-LEFT EDGE      | 1    |
| 32       | UN 21002    | SS WEAR SRTIPS-RIGHT EDGE     | 1    |
| 33       | ES-GVL      | GVL EAR SAVER                 | 2    |
| 34       | 516-W F     | 5/16 FENDER WASHER            | 4    |

**NOTES:**  
 PART NUMBER BILL OF MATERIAL  
 (XX = BRAND) (XX = COLOR)

GL = GLEANER = GY  
 MF = MASSEY = RD

**PROPRIETARY AND CONFIDENTIAL**  
 THE INFORMATION CONTAINED IN THIS DRAWING IS THE SOLE PROPERTY OF GVL. ANY REPRODUCTION IN PART OR AS A WHOLE WITHOUT THE WRITTEN PERMISSION OF GVL IS PROHIBITED.

|                     |         |   |
|---------------------|---------|---|
| NAME                | DATE    | <b>GVL</b>                                    |
| DRAWN ALS           | 5/21/08 |   |
| CHECKED             |         |   |
| ENG APPR.           |         |   |
| MFG APPR.           |         |   |
| Q.A.                |         | TITLE:<br><b>AGCO 36" CENTER-HUGGER GVL I</b> |
| COMMENTS:           |         | SIZE DWG. NO. REV<br><b>B XX H 3623</b>       |
| SCALE: 1:12 WEIGHT: |         | SHEET 1 OF 1                                  |



| ITEM NO. | PART NUMBER | DESCRIPTION                   | QTY. |
|----------|-------------|-------------------------------|------|
| 1        | XX 03701    | 36"/38" CENTER BACK           | 1    |
| 2        | XX 13700    | 36"/38" CENTER GATHERER FRONT | 1    |
| 3        | DA 13702    | 37" MAIN FRAME                | 1    |
| 4        | UN 13703    | 36"-38" FRONT GATH BRACKET    | 1    |
| 5        | DA 03804    | 38" REAR HOLD DOWN BRKT       | 1    |
| 6        | DA 03712    | 37" FRT HINGING BRKT          | 1    |
| 7        | DA 00009    | HOOK-HUGGER SERIES            | 2    |
| 8        | UN 00006    | 5/8" JAM NUT PLATE            | 2    |
| 9        | 58-4 HDP    | 5/8"x4" LG HOLD DOWN PIN      | 2    |
| 10       | 58-JN       | 5/8" JAM NUT                  | 2    |
| 11       | 58-W SAE    | 5/8" SAE WASHER               | 4    |
| 12       | 14-LP       | 1/4" LYNCH PIN                | 2    |
| 13       | 14-34 TTS   | 1/4"x3/4" TR TAPPING SCREW    | 10   |
| 14       | 516-34 CB   | 5/16"x3/4" CARRAGE BOLT       | 4    |
| 15       | 516-34 HB   | 5/16"x3/4" HX HD BOLT         | 10   |
| 16       | 516-FSN     | 5/16" FLANGE SERRATED NUT     | 4    |
| 17       | 516-W USS   | 5/16" USS FLAT WASHER         | 6    |
| 18       | 38-1 CB     | 3/8"x1" CARR BOLT-SHORT NECK  | 8    |
| 19       | 38-W USS    | 3/8" USS FLAT WASHER          | 3    |
| 20       | 38-1 HB     | 3/8"x1" HX HD BOLT            | 1    |
| 21       | 38-134 THB  | 3/8"x1 3/4" TRUSS HEAD BOLT   | 4    |
| 22       | 38-FSN      | 3/8" FLANGE SERRATED NUT      | 13   |
| 23       | 38-NLN      | 3/8" NYLON LOCK NUT           | 2    |
| 24       | 38-3 UB     | 3/8"x3" U-BOLT                | 1    |
| 25       | 12-150 MHB  | 12X150 HX HD METRIC BOLT      | 2    |
| 26       | 12-MLN      | 12 METRIC LOCK NUT            | 2    |
| 27       | 12-W SAE    | 1/2" SAE WASHER               | 2    |
| 28       | PCC-316     | 3/16 PROOF COIL CHAIN         | 19   |
| 29       | SN-531      | SERIAL NUMBER TAG             | 1    |
| 30       | WP-96       | Wear Point                    | 1    |
| 31       | UN 21001    | SS WEAR SRTIPS-LEFT EDGE      | 1    |
| 32       | UN 21002    | SS WEAR SRTIPS-RIGHT EDGE     | 1    |
| 33       | ES-GVL      | GVL EAR SAVER                 | 2    |
| 34       | 516-W F     | 5/16 FENDER WASHER            | 4    |

**NOTES:**  
 PART NUMBER BILL OF MATERIAL  
 (XX = BRAND) (XX = COLOR)

GL = GLEANER = GY  
 MF = MASSEY = RD

| NAME      |     | DATE    | GVL         |                  |  |
|-----------|-----|---------|-------------|------------------|--|
| DRAWN     | ALS | 5/21/08 |             |                  | <b>TITLE:</b><br><b>AGCO 38" CENTER-HUGGER GVL I</b> |
| CHECKED   |     |         |             |                  |  |
| ENG APPR. |     |         |             |                  |  |
| MFG APPR. |     |         |             |                  |  |
| Q.A.      |     |         |             |                  |  |
| COMMENTS: |     |         | SIZE        | DWG. NO.         | REV  |
|           |     |         | <b>B</b>    | <b>XX H 3823</b> |  |
|           |     |         | SCALE: 1:12 | WEIGHT:          | SHEET 1 OF 1   |

**PROPRIETARY AND CONFIDENTIAL**  
 THE INFORMATION CONTAINED IN THIS DRAWING IS THE SOLE PROPERTY OF GVL. ANY REPRODUCTION IN PART OR AS A WHOLE WITHOUT THE WRITTEN PERMISSION OF GVL IS PROHIBITED.