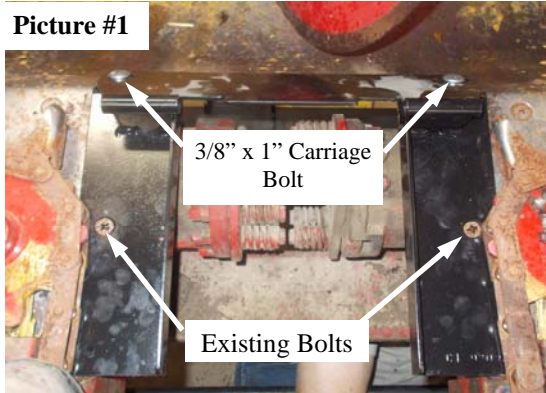




The Original Farmer Designed
59711 U.S. Hwy 12, Litchfield, MN 55355
1-888-485-8411

Assembly Instructions GVL II—Case IH 900/ 1000 Series 30" Center (CI 93025)

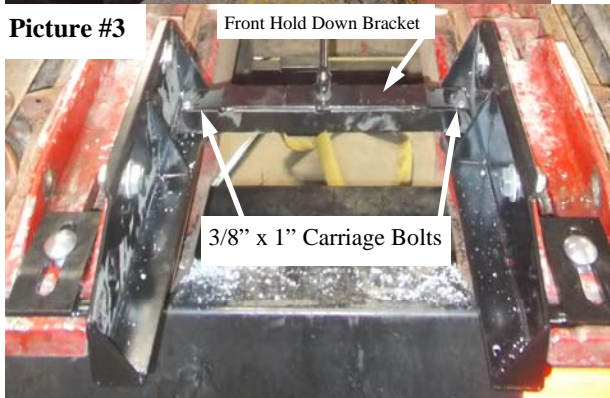
Picture #1



Picture #2



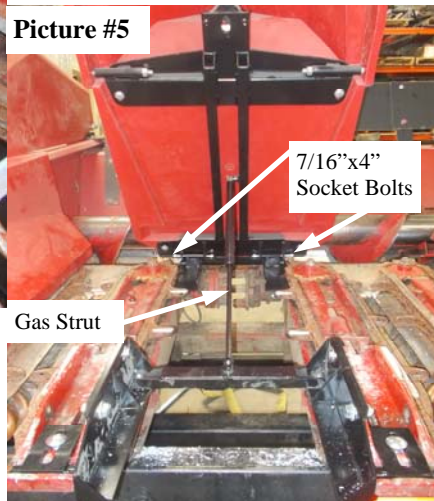
Picture #3



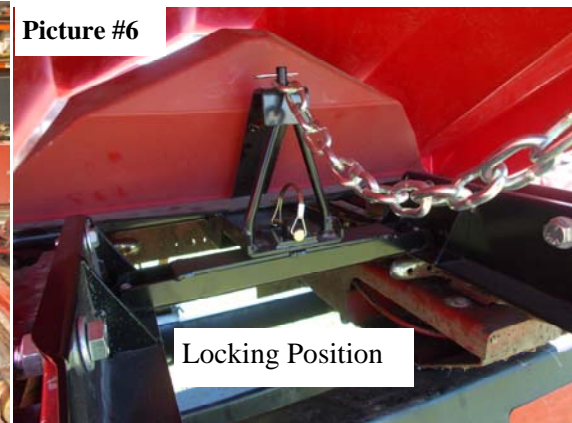
Picture #4



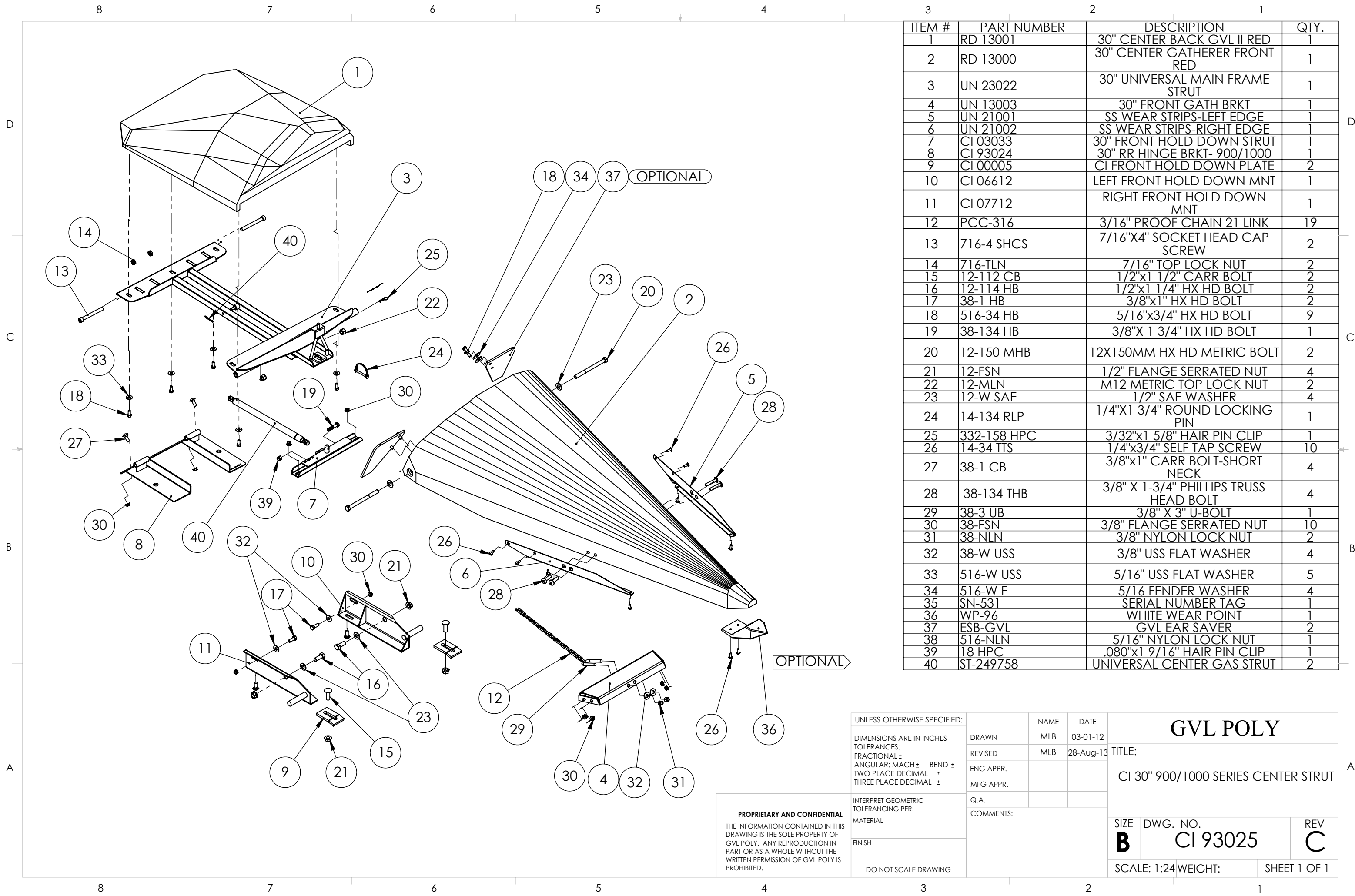
Picture #5



Picture #6



1. Remove metal Gatherer Shields.
2. Remove all hinges, brackets, latches and support rods.
3. Install the Rear Hinge Bracket. Using the existing Phillips counter sunk bolts and nuts near the chain sprocket, attach the front part of the mount. Attach the rear with the 3/8" x 1" carriage bolts and nuts provided. **(Picture #1)** Use the 3/8" washers (Not provided), to shim the rear hinge out as needed. **(Picture #2)** Square the rear hinging bracket using a tape measure.
4. Install the Left and Right Front Hold Down Mounts to the front cast pieces, using 1/2" x 1 1/2" Carriage bolts, 1/2" flanged serrated nuts and the Front Hold Down Plate. **(Picture # 3)**
5. Bolt the Front Hold Down Mount with the 1/2" x 1 1/4" hex head bolt and 1/2" flanged serrated nuts to the cast piece. **(Picture #3)**
6. Drill a 3/8" hole through the front cast at the rear of the slot of the front mounting bracket. Bolt the rear of the cast with a 3/8" x 1" hex bolt, washer and flanged serrated nut.
7. Mount the Front Hold Down Bracket using 3/8" x 1" carriage bolts, washers and Flanged serrated nuts. (Leave Loose) **(Picture #3 & #4)**
8. Place the unit on the head and install the 7/16" x 4" rear Hinge Socket Bolts with the 7/16" Top Lock Nut toward the center. **(Picture #5)**
9. Fasten the Gas Strut in the slotted bracket using the 5/16"x 1-3/4" Bolt on the Front Hinge Bracket. Remove the round lock pin. Lower the unit and tighten the 3/8" carriage bolts on the Front Hold Down Bracket. Lock the unit down with the round lock pin. **(Picture #6)**
11. **Check to make sure the drive clutch does not touch any bolts or pins.**
12. **Tighten all bolts and nuts.**
13. Remove PVP pipe that is around the adjustment chain. (For shipping purposes only.)



ITEM #	PART NUMBER	DESCRIPTION	QTY.
1	RD 13001	30" CENTER BACK GVL II RED	1
2	RD 13000	30" CENTER GATHERER FRONT RED	1
3	UN 23022	30" UNIVERSAL MAIN FRAME STRUT	1
4	UN 13003	30" FRONT GATH BRKT	1
5	UN 21001	SS WEAR STRIPS-LEFT EDGE	1
6	UN 21002	SS WEAR STRIPS-RIGHT EDGE	1
7	CI 03033	30" FRONT HOLD DOWN STRUT	1
8	CI 93024	30" RR HINGE BRKT- 900/1000	1
9	CI 00005	CI FRONT HOLD DOWN PLATE	2
10	CI 06612	LEFT FRONT HOLD DOWN MNT	1
11	CI 07712	RIGHT FRONT HOLD DOWN MNT	1
12	PCC-316	3/16" PROOF CHAIN 21 LINK	19
13	716-4 SHCS	7/16"x4" SOCKET HEAD CAP SCREW	2
14	716-TLN	7/16" TOP LOCK NUT	2
15	12-112 CB	1/2"x1 1/2" CARR BOLT	2
16	12-114 HB	1/2"x1 1/4" HX HD BOLT	2
17	38-1 HB	3/8"x1" HX HD BOLT	2
18	516-34 HB	5/16"x3/4" HX HD BOLT	9
19	38-134 HB	3/8" X 1 3/4" HX HD BOLT	1
20	12-150 MHB	12X150MM HX HD METRIC BOLT	2
21	12-FSN	1/2" FLANGE SERRATED NUT	4
22	12-MLN	M12 METRIC TOP LOCK NUT	2
23	12-W SAE	1/2" SAE WASHER	4
24	14-134 RLP	1/4"x1 3/4" ROUND LOCKING PIN	1
25	332-158 HPC	3/32"x1 5/8" HAIR PIN CLIP	1
26	14-34 TTS	1/4"x3/4" SELF TAP SCREW	10
27	38-1 CB	3/8"x1" CARR BOLT-SHORT NECK	4
28	38-134 THB	3/8" X 1-3/4" PHILLIPS TRUSS HEAD BOLT	4
29	38-3 UB	3/8" X 3" U-BOLT	1
30	38-FSN	3/8" FLANGE SERRATED NUT	10
31	38-NLN	3/8" NYLON LOCK NUT	2
32	38-W USS	3/8" USS FLAT WASHER	4
33	516-W USS	5/16" USS FLAT WASHER	5
34	516-W F	5/16" FENDER WASHER	4
35	SN-531	SERIAL NUMBER TAG	1
36	WP-96	WHITE WEAR POINT	1
37	ESB-GVL	GVL EAR SAVER	2
38	516-NLN	5/16" NYLON LOCK NUT	1
39	18 HPC	.080"x1 9/16" HAIR PIN CLIP	1
40	ST-249758	UNIVERSAL CENTER GAS STRUT	2

UNLESS OTHERWISE SPECIFIED:
 DIMENSIONS ARE IN INCHES
 TOLERANCES:
 FRACTIONAL ±
 ANGULAR: MACH ± BEND ±
 TWO PLACE DECIMAL ±
 THREE PLACE DECIMAL ±

INTERPRET GEOMETRIC TOLERANCING PER:
 MATERIAL
 FINISH

DO NOT SCALE DRAWING

PROPRIETARY AND CONFIDENTIAL
 THE INFORMATION CONTAINED IN THIS DRAWING IS THE SOLE PROPERTY OF GVL POLY. ANY REPRODUCTION IN PART OR AS A WHOLE WITHOUT THE WRITTEN PERMISSION OF GVL POLY IS PROHIBITED.

NAME	DATE
DRAWN MLB	03-01-12
REVISED MLB	28-Aug-13
ENG APPR.	
MFG APPR.	
Q.A.	
COMMENTS:	

GVL POLY

TITLE:
 CI 30" 900/1000 SERIES CENTER STRUT

SIZE B	DWG. NO. CI 93025	REV C
------------------	----------------------	-----------------

SCALE: 1:24 WEIGHT: SHEET 1 OF 1