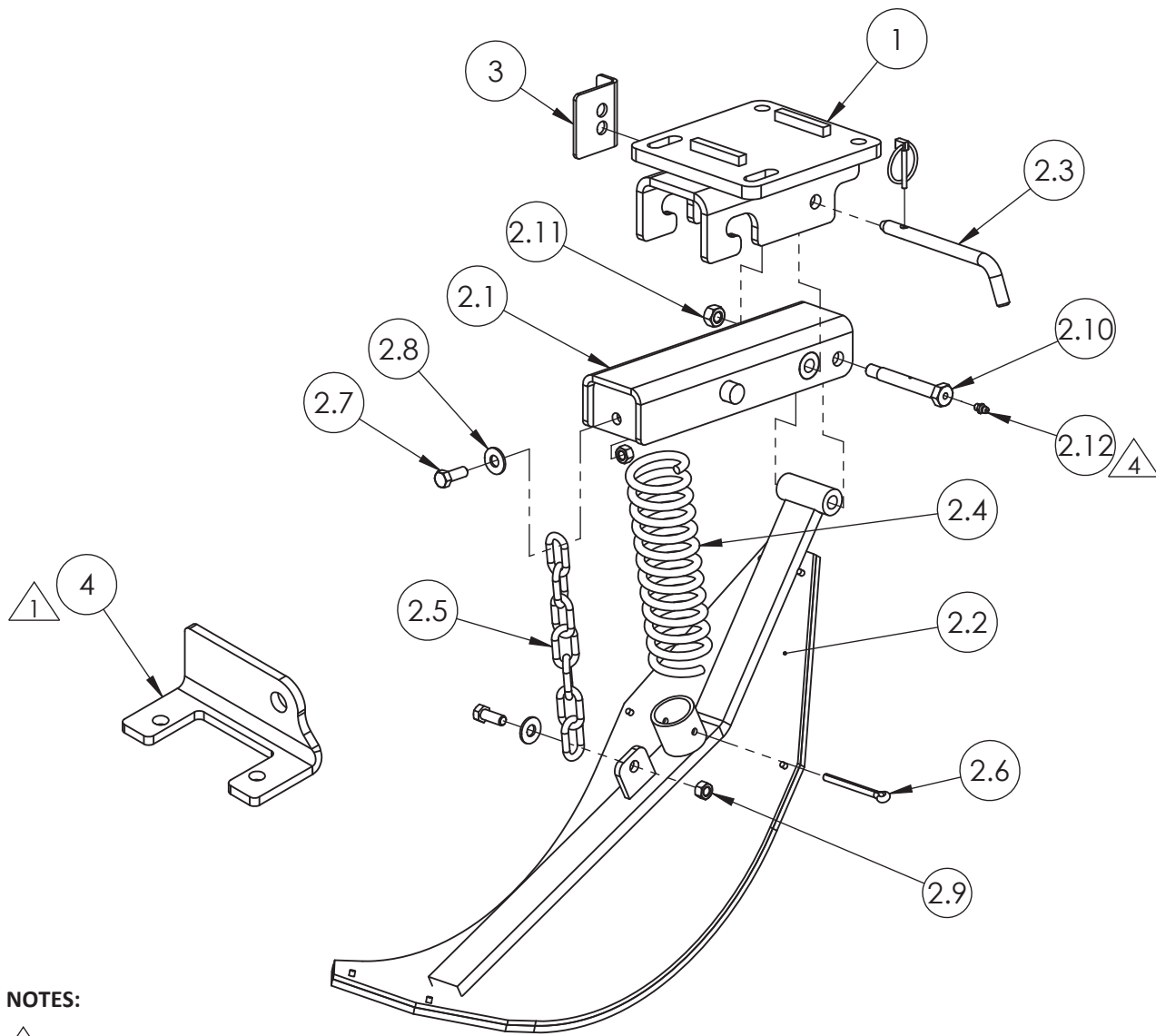


# CASE IH 2200/2400/3200/3400 - NEW HOLLAND 96C/96D/98C/98D/996

## STALK STOMPER PARTS LISTING/ASSEMBLY INSTRUCTIONS



**NOTES:**

- ① Item 4 is optional and not included in the kit, please order separately
- ② 41712 - 14" Stalk Stalk Shoe Assy
- ③ 41748 - 14" Stalk Stomper Shoe W/Poly  
Install Self-Tapping Grease Fitting into end of Pivot Bolt.
- ④ Torque grease fitting to 65-70 inch pounds. DO NOT OVERTIGHTEN!

ITEM #	PART #	DESCRIPTION	QTY	ITEM #	PART #	DESCRIPTION	QTY
1	41822	HEADER BRACKET	1	2.7	00104	BOLT, 3/8"-16 X 1" HEX	2
② 2	41823	STALK STOMPER ASSY 9"	1	2.8	00249	WASHER, 3/8" FLAT	2
2.1	41824	SHOE BRACKET	1	2.9	00211	NUT, 3/8"-16 TOP LOCK	2
③ 2.2	41825	STALK STOMPER SHOE W/POLY 9"	1	2.10	01001	BOLT, CUSTOM (GREASEABLE)	1
2.3	41746	PIN ASSY (WITH LYNCH PIN)	1	2.11	00213	NUT, 7/16"-14 HEX TOP LOCK	1
2.4	40649	SPRING	1	2.12	01009	GREASE FITTING, 1/4"-28 STRAIGHT	1
2.5	00931	CHAIN	1	3	22279	PIN GUARD	1
2.6	00691	PIN, 1/4" X 3" COTTER	1	4	22043	MOUNT BRACKET (OPTIONAL)	



**120 Eastgate Drive SE  
PO Box 7  
Hutchinson, MN 55350**

**1-800-788-6483  
1-320-587-2322  
1-320-587-6112 (Fax)**

**WWW.MAYWES.COM**

# CASE IH 2200/2400/3200/3400 - NEW HOLLAND 96C/96D/98C/98D/996

## STALK STOMPER INSTALLATION

### Safety Procedure:

- Park combine on level ground and engage the parking brake.
- Raise the head and lock in the upright position.
- Support all row units that stalk stompers will be installed on to ensure row units remain stationary during installation.

### Installation Procedure:

- Remove the factory gearbox support brackets (Fig. 1). Replace with Header Bracket (41822) positioning the slotted holes on the mount plate toward the rear of the head and fasten reusing the factory hardware (Fig. 2).
- **Note:** If installing stalk stomper on the same row that the deck plate cylinder is attached; replace the factory mounting bracket with Mount Bracket (22043) which is not included in the kit, please order separately (Fig. 3).
- Lift the Stalk Stomper Assy (41823) into the Header Bracket (41822) inserting the mount pins on the Stalk Stomper Assy into the slots on the Header Bracket. Slide the Stalk Stomper Assy back in the Header Bracket ensuring the mount pins are seated in the slots.
- Insert the Bent Pin through the aligning holes in the Header Bracket and the Stalk Stomper Assy securing the Stalk Stomper Assy into position. Install the Pin Guard onto the Bent Pin with the shield facing the front of the corn head (Fig. 4). Insert the Lynch Pin into the Bent Pin flipping the locking loop on the Lynch Pin over the end of the Bent Pin locking the pins together and securing the Pin Guard between the Lynch Pin and the Header Bracket.
- **Note:** The Pin Guard is designed to allow installation of both the Lynch Pin and Pin Guard on either side of the Header Bracket.

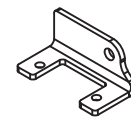
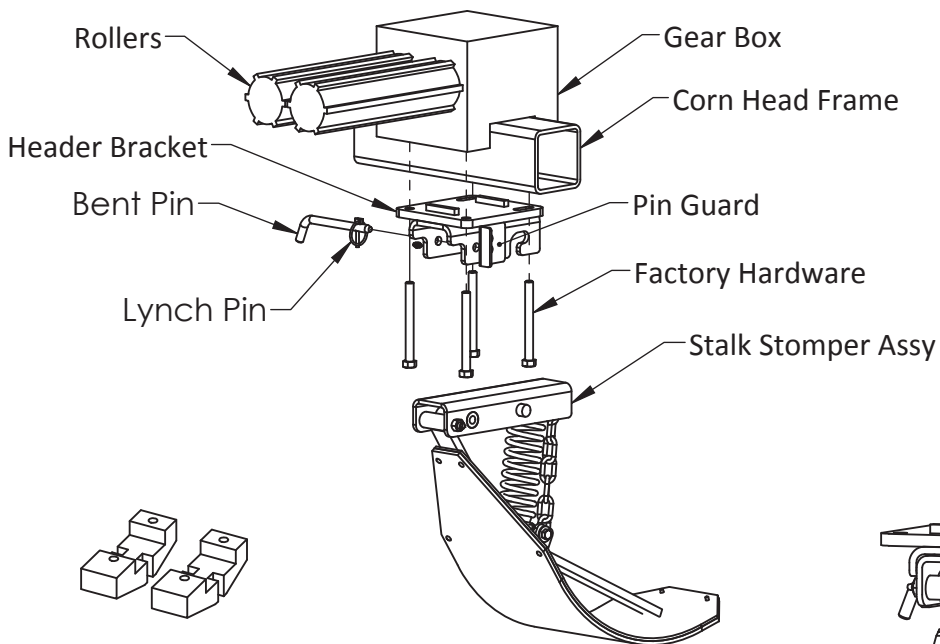


Figure 3  
Deck Plate  
Mount Bracket  
(Optional)

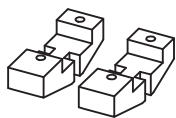


Figure 1  
Gear Box  
Support Brackets

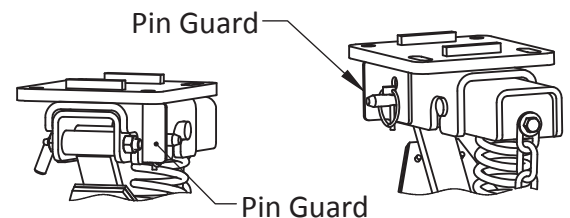


Figure 4  
Pin Guard Placement



120 Eastgate Drive SE  
PO Box 7  
Hutchinson, MN 55350

1-800-788-6483  
1-320-587-2322  
1-320-587-6112 (Fax)

WWW.MAYWES.COM