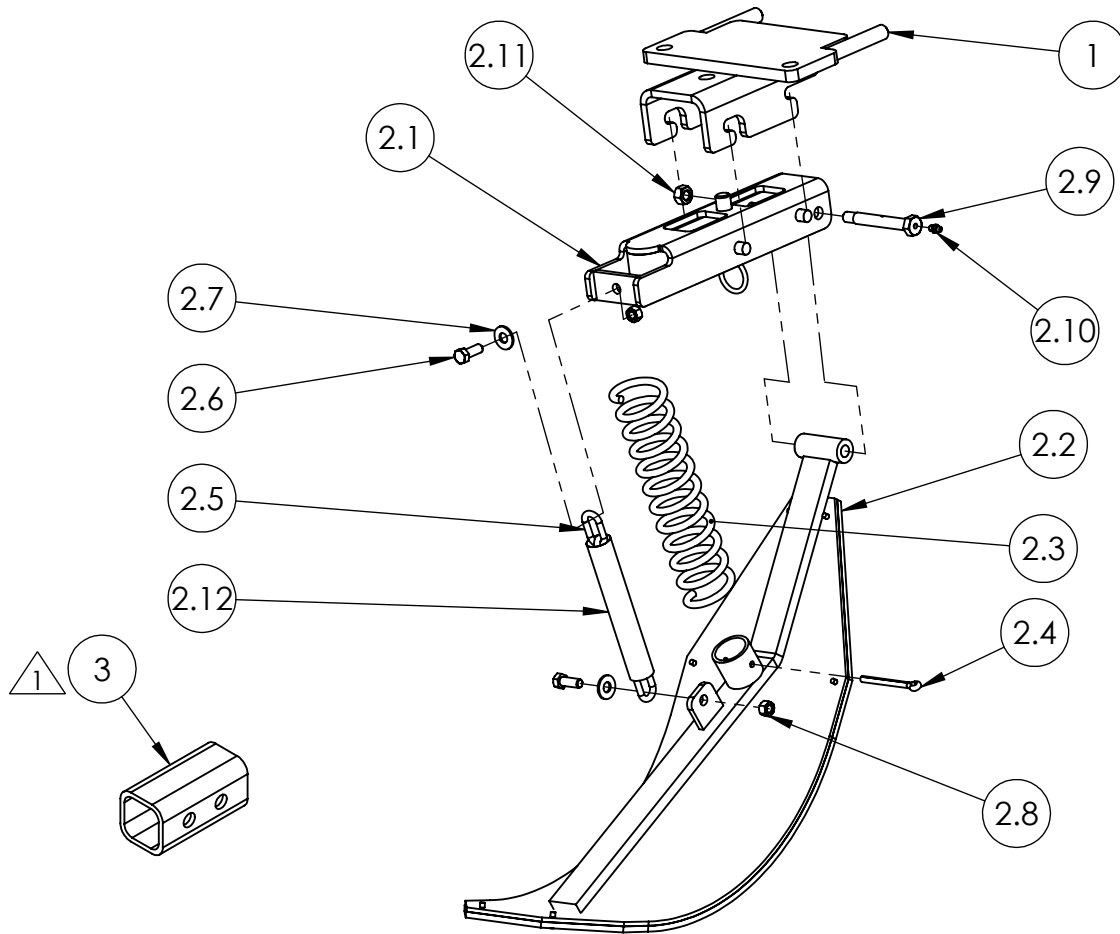


CASE IH 900/1000 SERIES QD2 STALK STOMPER PARTS LISTING/ASSEMBLY INSTRUCTIONS



NOTES:

- ① Item 3 is required for 8 row heads only and is not included in the kit, please order separately
- ② 43016 - 14" Stalk Stomper Shoe Assy
- ③ 41748 - 14" Stalk Stomper Shoe W/Poly
- ④ Install Self-Tapping Grease Fitting into end of Pivot Bolt.
Torque grease fitting to 65-70 inch pounds. **DO NOT OVERTIGHTEN!**

ITEM #	PART #	DESCRIPTION	QTY	ITEM #	PART #	DESCRIPTION	QTY
1	43009	QD2 HEADER BRACKET	1	2.7	00249	WASHER, 3/8" FLAT	2
② 2	43003	STALK STOMPER ASSY 9"	1	2.8	00209	NUT, 3/8"-16 HEX	2
2.1	43004	SHOE BRACKET ASSY	1	2.9	01001	BOLT, CUSTOM (GREASEABLE)	1
③ 2.2	41825	STALK STOMPER SHOE W/POLY 9"	1	2.10	01009	GREASE FITTING, 1/4"-28 STRAIGHT	1
2.3	01040	SPRING	1	2.11	00213	NUT, 7/16"-14 HEX TOP LOCK	1
2.4	00691	PIN, 1/4" X 3" COTTER	1	2.12	01046	CHAIN SLEEVE	1
2.5	00931	CHAIN	1	3	40144	SPACER BLOCK (OPTIONAL)	PAIR
2.6	00104	BOLT, 3/8"-16 X 1" HEX	2				



**120 Eastgate Drive SE
PO Box 7
Hutchinson, MN 55350**

**1-800-788-6483
1-320-587-2322
1-320-587-6112 (Fax)**

WWW.MAYWES.COM

CASE IH 900/1000 SERIES STALK STOMPER INSTALLATION

Safety Procedure:

- Park Combine on level ground and engage the parking brake.
- Raise the head and lock in the upright position.
- Support all row units that stalk stompers will be installed on to ensure row units remain stationary during installation.

Installation Procedure:

- Remove the gear box bolts and the eye bolts which secure the row unit to the main frame of the corn head. Replace the eyebolts with Header Bracket (43009) by inserting the threaded rods thru the lower frame mount. Insert the gear box bolts thru the header bracket into the gearbox and tighten to factory recommended torque specifications. Secure the threaded rods reusing the factory hardware and tighten to factory recommended torque specifications (Fig. 1).
- **Tip:**
To prevent gulling of Gear Box bolts, apply anti-seize to the bolts before re-installing into the gear box.
- **Note:**
If installing stalk stompers on an 8 row head, Spacer Blocks (Fig. 2) will need to be installed on the outside ends of the diagonal cross brace on the rear of the head between the brace and the frame, setting the cross brace back to allow clearance for the stalk stompers. Unbolt the outside end of the cross brace, position Spacer Block between the brace and the frame and fasten (hardware not supplied). Spacer Blocks (40144) are not included in the kit, please order separately.
- Lift the Stalk Stomper Assy (43003) into mating features in the Header Bracket (43009). Pull Stalk Stomper Assy back until the lock pin assembly snaps into place.

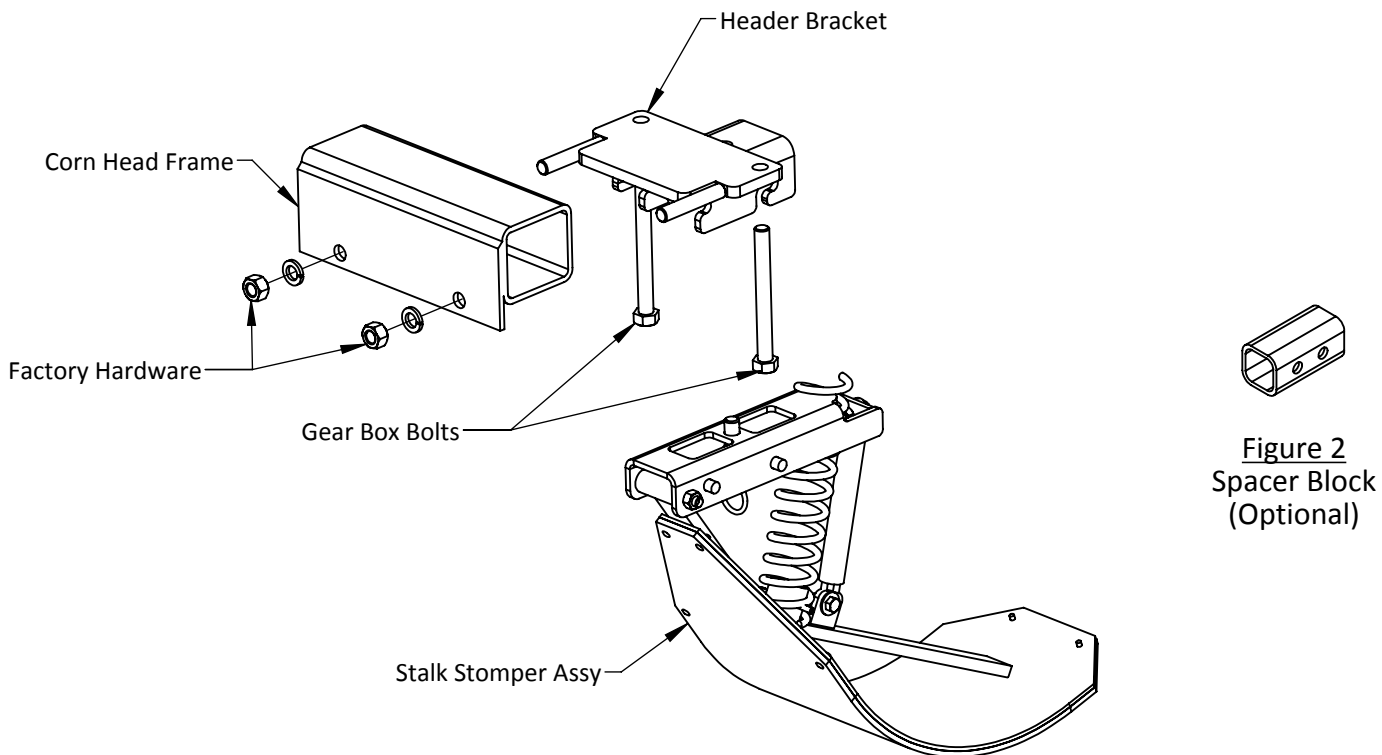


Figure 1



120 Eastgate Drive SE
PO Box 7
Hutchinson, MN 55350

1-800-788-6483
1-320-587-2322
1-320-587-6112 (Fax)

WWW.MAYWES.COM