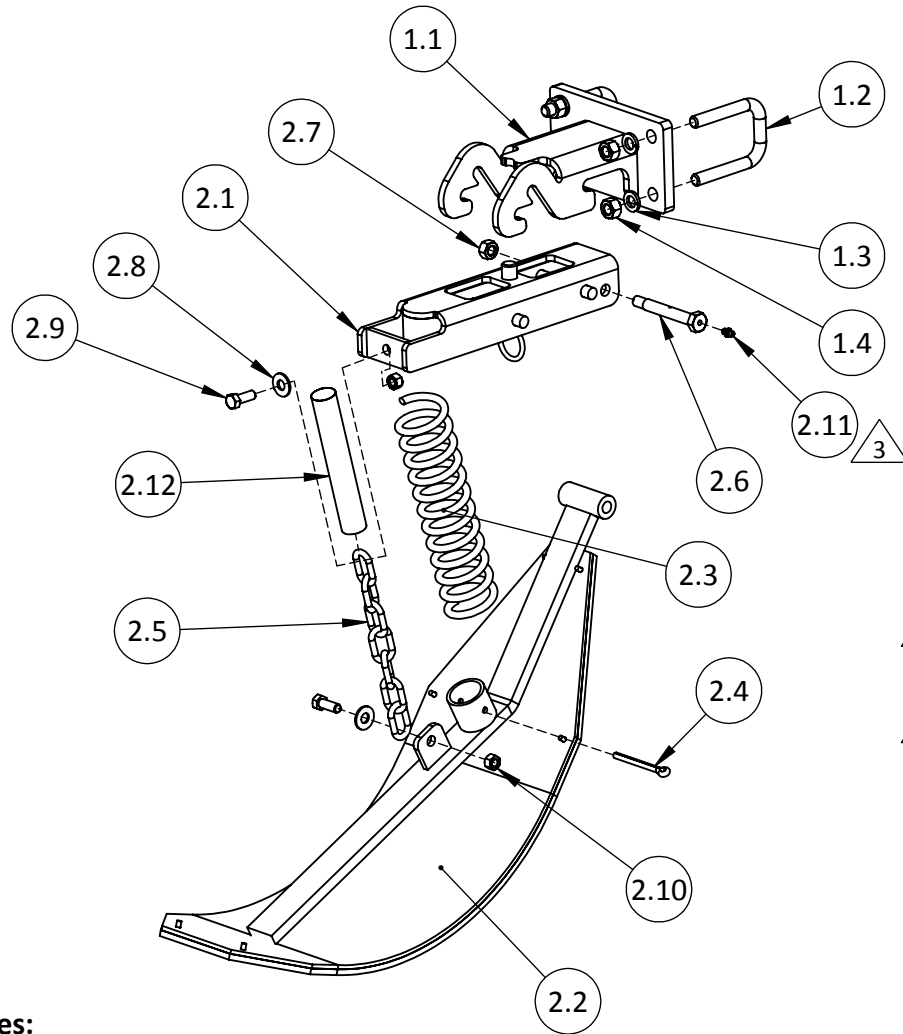


QD2 TOOLBAR MOUNT STALK STOMPER ASSEMBLY INSTRUCTIONS / PARTS LISTING

43000 QD2 TOOLBAR MOUNT STALK STOMPER ASSEMBLY



ITEM #	PART #	DESCRIPTION	QTY
1	43001	TOOLBAR MOUNT BRACKET ASSY	1
1.1	43002	TOOLBAR MOUNT BRACKET	1
1.1.3	24022	LOCK PLATE	1
1.2	00986	U-BOLT 1/2"-13	2
1.3	00255	WASHER, 1/2" SPRING LOCK	4
1.4	00214	NUT, 1/2"-13 HEX	4
2	43003	STALK STOMPER ASSY 9"	1
2.1	43004	SHOE BRACKET ASSY	1
2.2	41825	STALK STOMPER SHOE W/POLY 9"	1
2.3	01040	SPRING	1
2.4	00691	PIN, 1/4" X 3" COTTER	1
2.5	00931	CHAIN	1
2.6	01001	BOLT, CUSTOM (GREASEABLE)	1
2.7	00213	NUT, 7/16"-14 HEX TOP LOCK	1
2.8	00249	WASHER, 3/8" FLAT	2
2.9	00104	BOLT, 3/8"-16 X 1" HEX	2
2.10	00209	NUT, 3/8"-16 HEX	2
2.11	01009	GREASE FITTING, 1/4"-28 STRAIGHT	1
2.12	01046	CHAIN SLEEVE	1

Notes:

- △ 1 43016 - 14" Stalk Stomper Shoe Assy
- △ 2 41748 - 14" Stalk Stomper Shoe W/Poly
- △ 3 Install Self-Tapping Grease Fitting into end of Pivot Bolt
Torque grease fitting to 65-70 inch pounds. DO NOT OVERTIGHTEN!



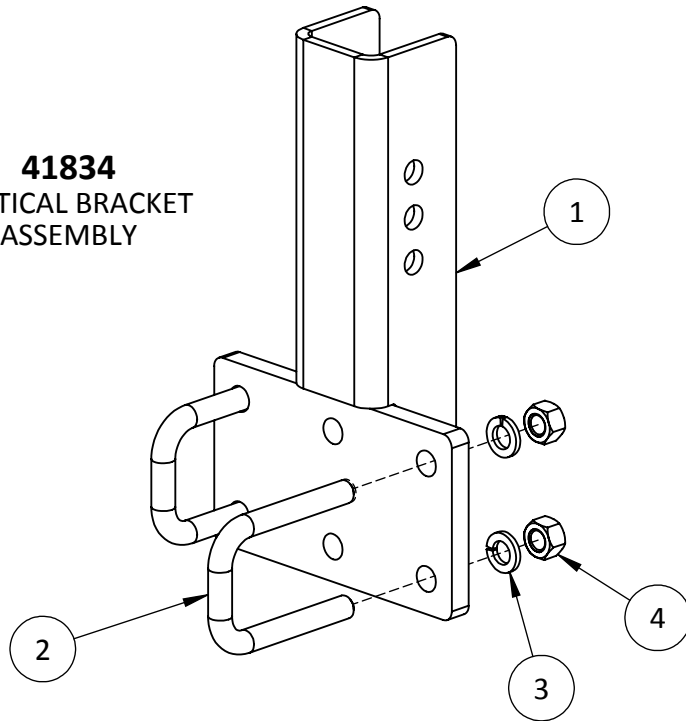
120 Eastgate Drive SE
PO Box 7
Hutchinson, MN 55350

1-800-788-6483
1-320-587-2322
1-320-587-6112 (Fax)

WWW.MAYWES.COM

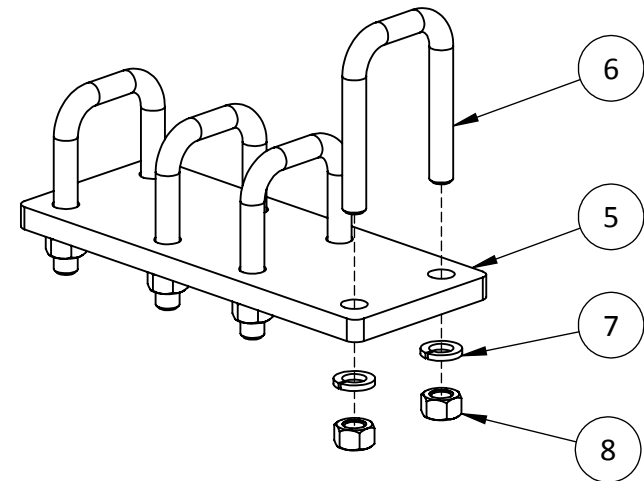
TOOLBAR MOUNT STALK STOMPER ASSEMBLY INSTRUCTIONS / PARTS LISTING

41834
VERTICAL BRACKET
ASSEMBLY



ITEM #	PART #	DESCRIPTION	QTY
1	41783	VERTICAL BRACKET	1
2	00986	U-BOLT 1/2"-13	2
3	00255	WASHER, 1/2" SPRING LOCK	4
4	00214	NUT, 1/2"-13 HEX	4

41827
TOOLBAR SPLICE



ITEM #	PART #	DESCRIPTION	QTY
5	22341	SPLICE PLATE	1
6	00986	U-BOLT 1/2"-13	4
7	00255	WASHER, 1/2" SPRING LOCK	8
8	00214	NUT, 1/2"-13 HEX	8

Items 9 and 10 listed below (but not shown) are not included in all kits, please order individually if needed.

ITEM #	PART #	DESCRIPTION	QTY
9	41672	72" TOOLBAR (2" X 2")	VARIES
10	41673	102" TOOLBAR (2" X 2")	VARIES

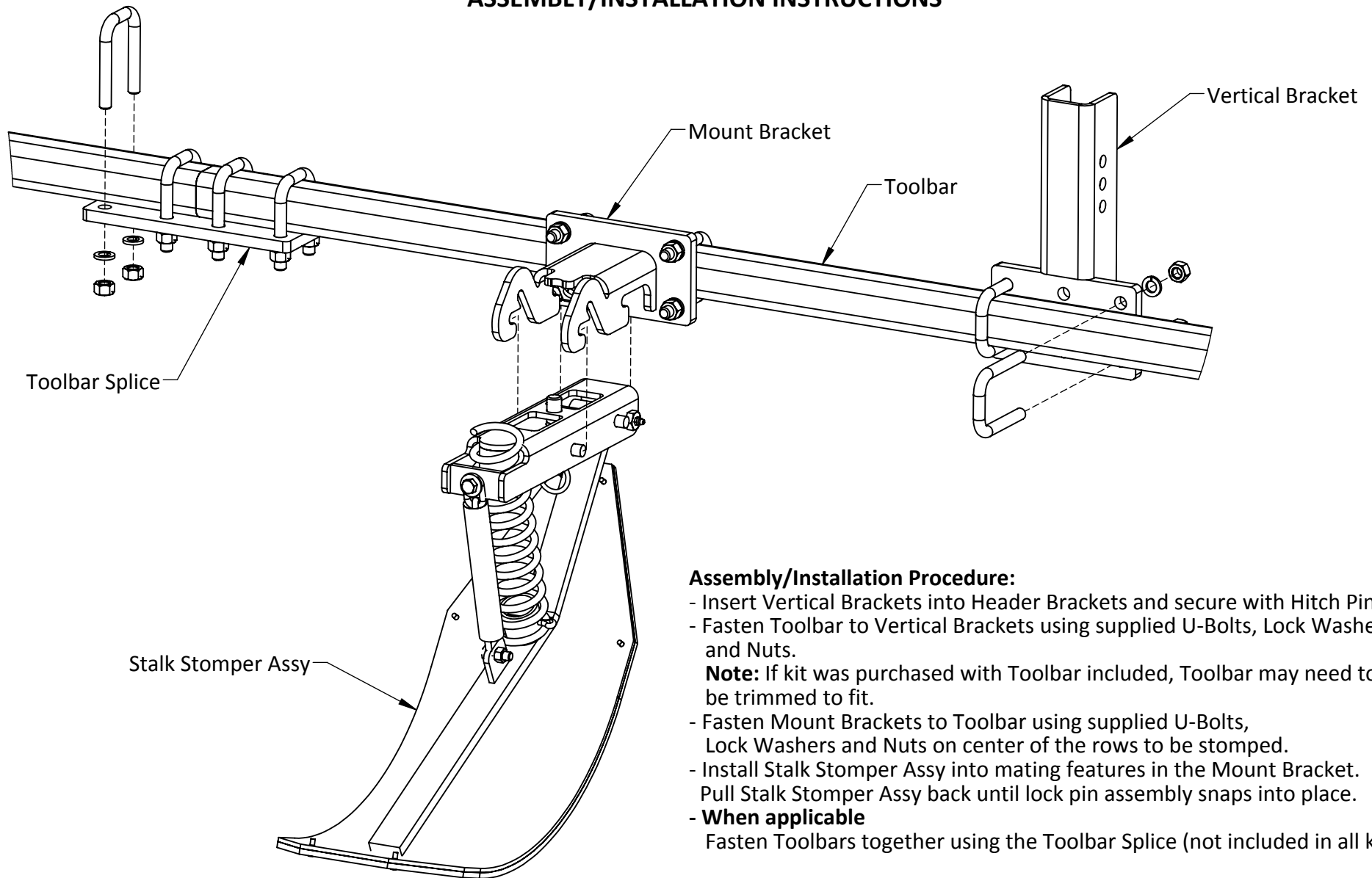


120 Eastgate Drive SE
PO Box 7
Hutchinson, MN 55350

1-800-788-6483
1-320-587-2322
1-320-587-6112 (Fax)

WWW.MAYWES.COM

QD2 TOOLBAR MOUNT STALK STOMPER ASSEMBLY/INSTALLATION INSTRUCTIONS



Assembly/Installation Procedure:

- Insert Vertical Brackets into Header Brackets and secure with Hitch Pin.
- Fasten Toolbar to Vertical Brackets using supplied U-Bolts, Lock Washers and Nuts.

Note: If kit was purchased with Toolbar included, Toolbar may need to be trimmed to fit.

- Fasten Mount Brackets to Toolbar using supplied U-Bolts, Lock Washers and Nuts on center of the rows to be stomped.
- Install Stalk Stomper Assy into mating features in the Mount Bracket. Pull Stalk Stomper Assy back until lock pin assembly snaps into place.
- **When applicable**
Fasten Toolbars together using the Toolbar Splice (not included in all kits).



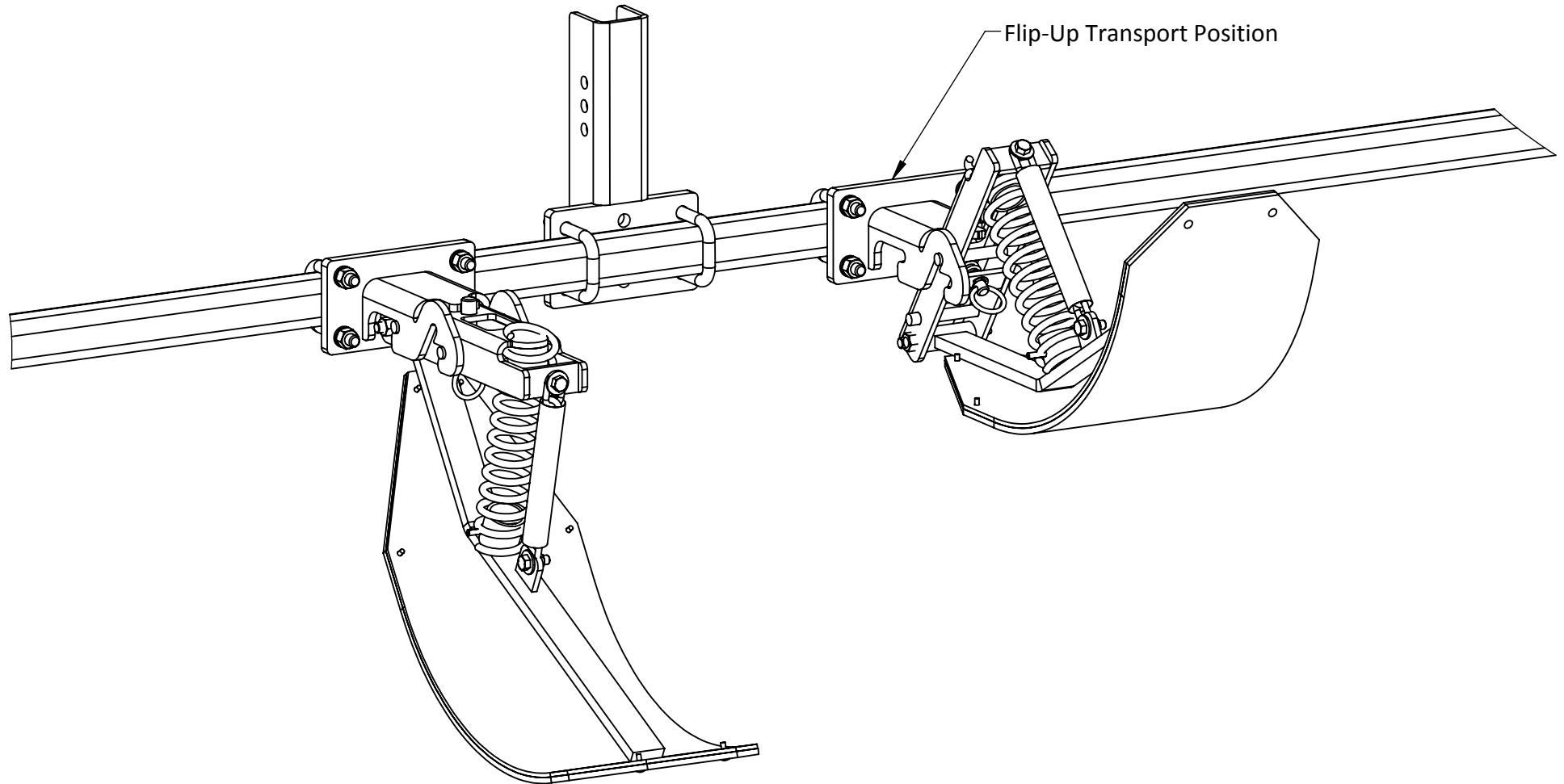
MAY WES
Original Poly People
A DIVISION OF PRIDE SOLUTIONS

120 Eastgate Drive SE
PO Box 7
Hutchinson, MN 55350

1-800-788-6483
1-320-587-2322
1-320-587-6112 (Fax)

WWW.MAYWES.COM

QD2 TOOLBAR MOUNT STALK STOMPER TRANSPORT POSITION



Flip-Up Transport Position (Toolbar Mount Only):

- 1) Pull down on Lock Pin Assembly to release Stalk Stomper Shoe
- 2) Place front mounting pin in upright position
- 3) Pull up until Lock Pin Assembly snaps into place



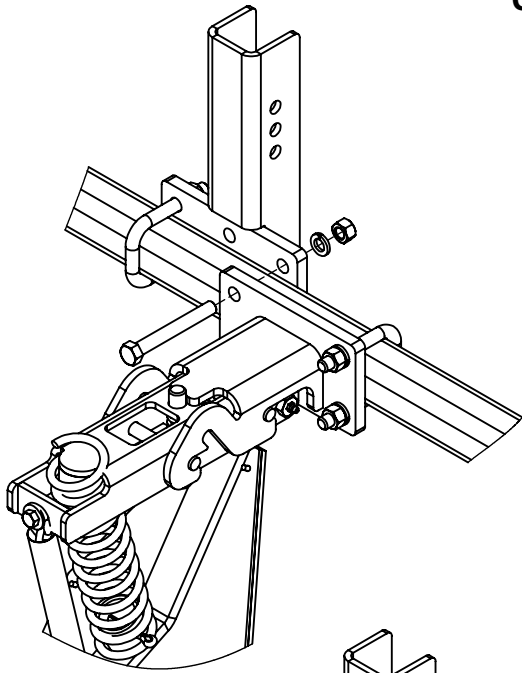
MAY WES
Original Poly People
A DIVISION OF PRIDE SOLUTIONS

120 Eastgate Drive SE
PO Box 7
Hutchinson, MN 55350

1-800-788-6483
1-320-587-2322
1-320-587-6112 (Fax)

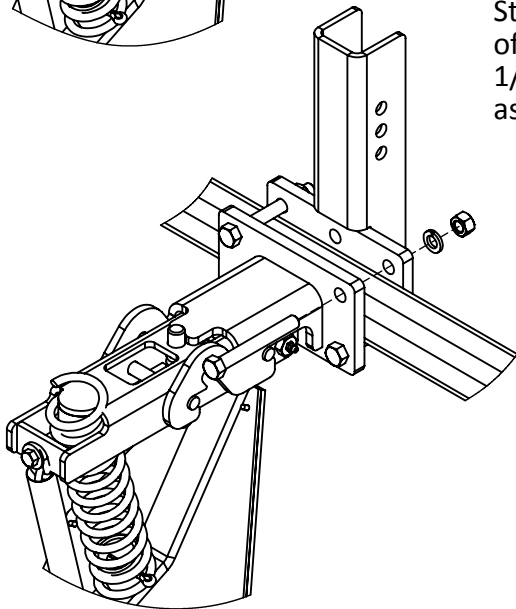
WWW.MAYWES.COM

QD2 TOOLBAR MOUNT STALK STOMPER OPTIONAL SETUPS



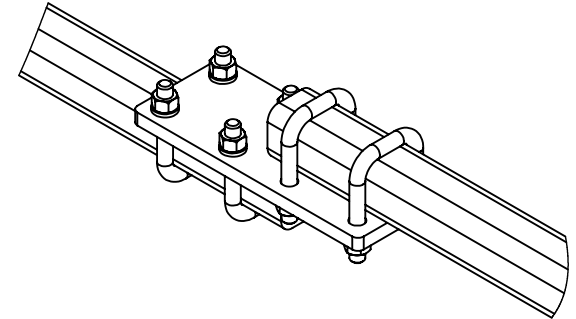
Overlapping Brackets

If necessary, Mount Brackets and Vertical Brackets can be overlapped in multiple positions to allow the Stalk Stomper Assy to be positioned on center of the row. Replace U-Bolts with 1/2"-13 x 4" Hex Bolts (not supplied) as shown on the left.



Offsetting Toolbars

If necessary, the Toolbars may be offset in any direction by positioning Toolbars on opposite sides of the Toolbar Splice as shown below.



Toolbar Splice Orientation

The Toolbar Splice Plate can be positioned on the bottom, top, front or back (shown below) of the Toolbars to provide the most rigidity per individual setup.

