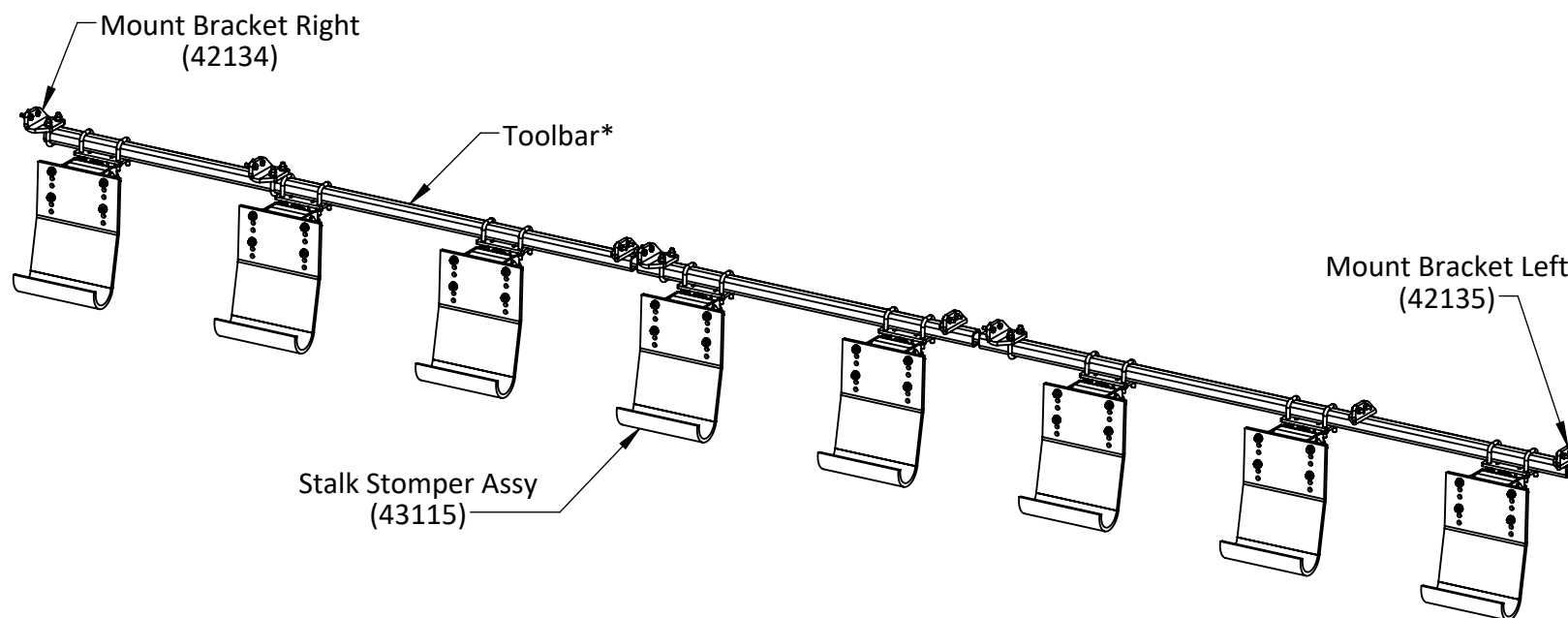


GERINGHOFF
HORIZON
G4 TOOLBAR MOUNT STALK STOMPER



Notes:

- Illustration shown is for reference purposes only. Quantities and components will vary. Please refer to individual component parts listings for specific information.
- * Toolbar is not included in all kits. If a kit without Toolbar was ordered, the customer is responsible for providing required Toolbar.

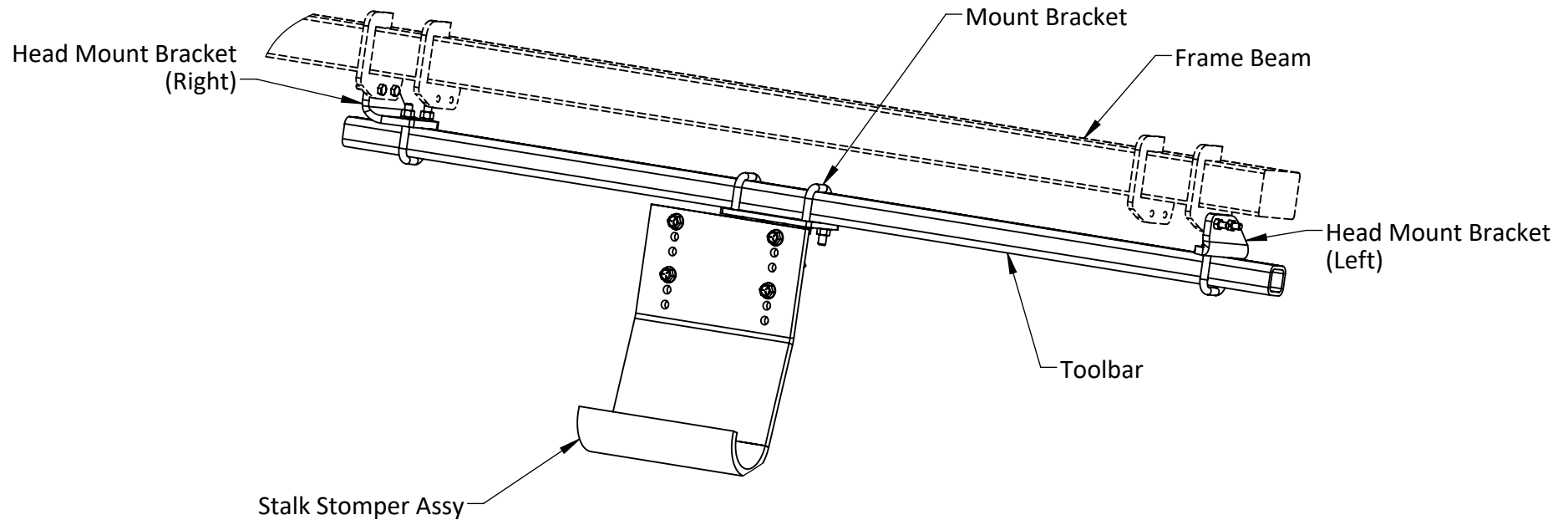


120 Eastgate Drive SE
Hutchinson, MN 55350

1-800-788-6483
1-320-587-2322
1-320-587-6112 (Fax)

WWW.MAYWES.COM

**GERINGHOFF
HORIZON
G4 TOOLBAR MOUNT STALK STOMPER
ASSEMBLY/INSTALLATION INSTRUCTIONS**



Assembly/Installation Procedure:

- Fasten Head Mount Bracket to mating holes in head frame using supplied Bolts and Lock Nuts (location and quantity will be determined by size of head and rows to be covered)
- Fasten Toolbar to Head Mount Brackets using supplied U-Bolts, Lock Washers and Nuts
- Note:** If kit was purchased with Toolbar included, Toolbar may need to be trimmed to fit
- Fasten Mount Brackets to Toolbar using supplied U-Bolts and Nuts on center of the rows to be stomped.



MAY WES
Original Poly People
A DIVISION OF PRIDE SOLUTIONS

120 Eastgate Drive SE
Hutchinson, MN 55350

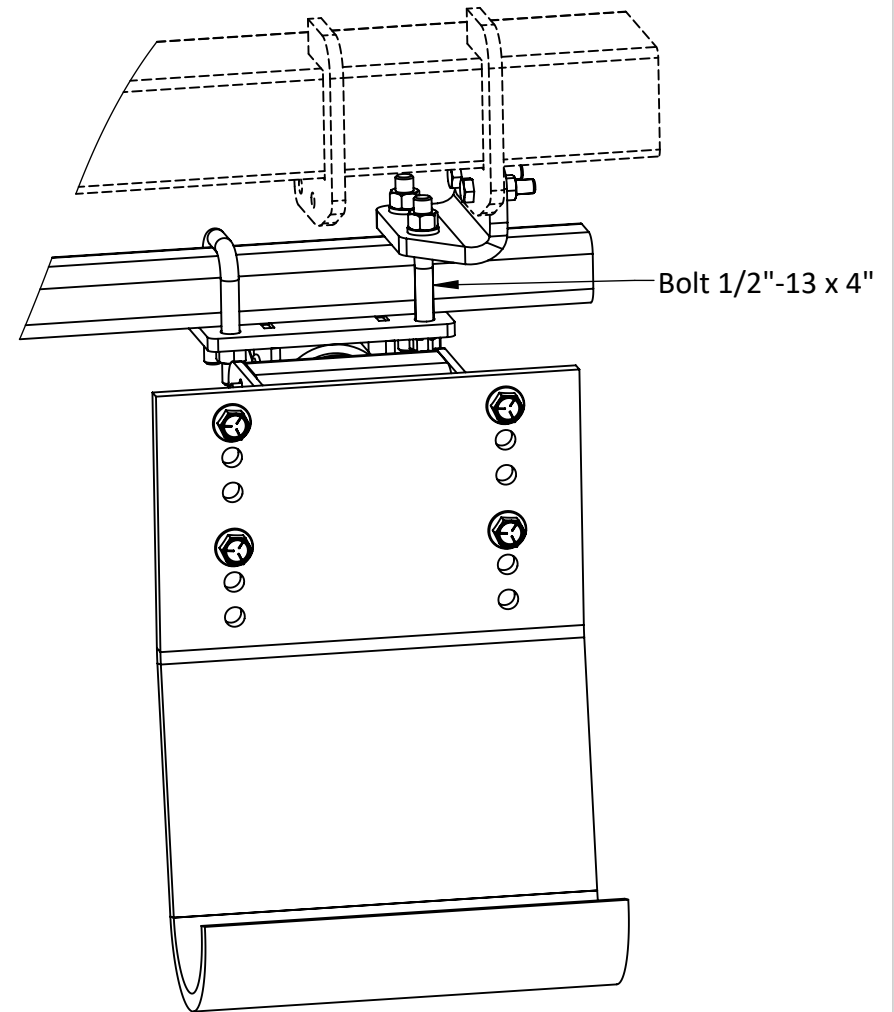
1-800-788-6483
1-320-587-2322
1-320-587-6112 (Fax)

WWW.MAYWES.COM

**GERINGHOFF
HORIZON
G4 TOOLBAR MOUNT STALK STOMPER
OPTIONAL SETUPS**

Overlapping Brackets

If necessary, Mount Brackets and Head Mount Brackets can be overlapped to allow the Stalk Stomper Assy to be positioned on center of the row. Replace U-Bolt with 1/2"-13 x 4" Hex Bolts as shown.



MAY WES
Original Poly People
A DIVISION OF PRIDE SOLUTIONS

120 Eastgate Drive SE
Hutchinson, MN 55350

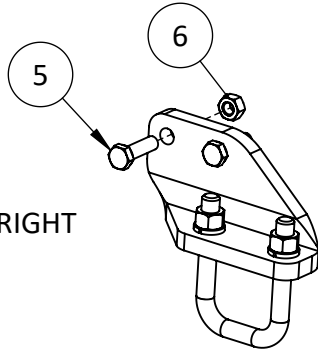
1-800-788-6483
1-320-587-2322
1-320-587-6112 (Fax)

WWW.MAYWES.COM

GERINGHOFF TOOLBAR MOUNT STALK STOMPER ASSEMBLY INSTRUCTIONS / PARTS LISTING

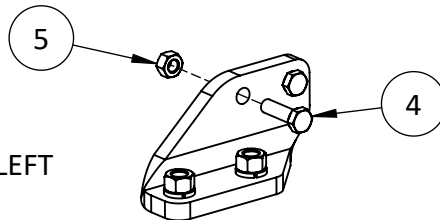
41827 (OPTIONAL) TOOLBAR SPLICE

42134
MOUNT BRACKET RIGHT

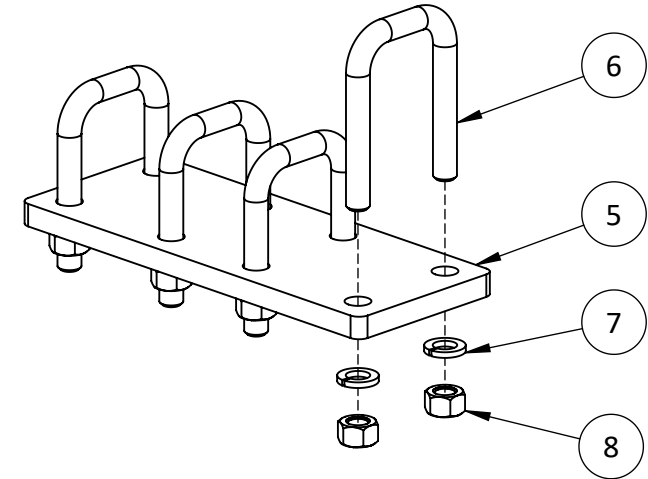


ITEM #	PART #	DESCRIPTION	QTY
1	22519	HEAD MOUNT BRACKET	1
2	00986	U-BOLT 1/2"-13	1
3	00255	WASHER, 1/2" SPRING LOCK	2
4	00214	NUT, 1/2"-13 HEX	2
5	01053	BOLT M10-1.5 X 35mm HEX	2
6	01053	NUT M10-1.5 TOPLOCK	2

42135
MOUNT BRACKET LEFT



ITEM #	PART #	DESCRIPTION	QTY
1	22520	HEAD MOUNT BRACKET	1
2	00255	WASHER, 1/2" SPRING LOCK	2
3	00214	NUT, 1/2"-13 HEX	2
4	01053	BOLT M10-1.5 X 35mm HEX	2
5	01053	NUT M10-1.5 TOPLOCK	2



ITEM #	PART #	DESCRIPTION	QTY
5	22341	SPLICE PLATE	1
6	00986	U-BOLT 1/2"-13	4
7	00255	WASHER, 1/2" SPRING LOCK	8
8	00214	NUT, 1/2"-13 HEX	8

Items 9 and 10 listed below (but not shown) are not included in all kits, please order individually if needed.

ITEM #	PART #	DESCRIPTION	QTY
9	41672	72" TOOLBAR (2" X 2")	VARIABLE
10	41673	102" TOOLBAR (2" X 2")	VARIABLE
34	00986	U-BOLT 1/2"-13	1



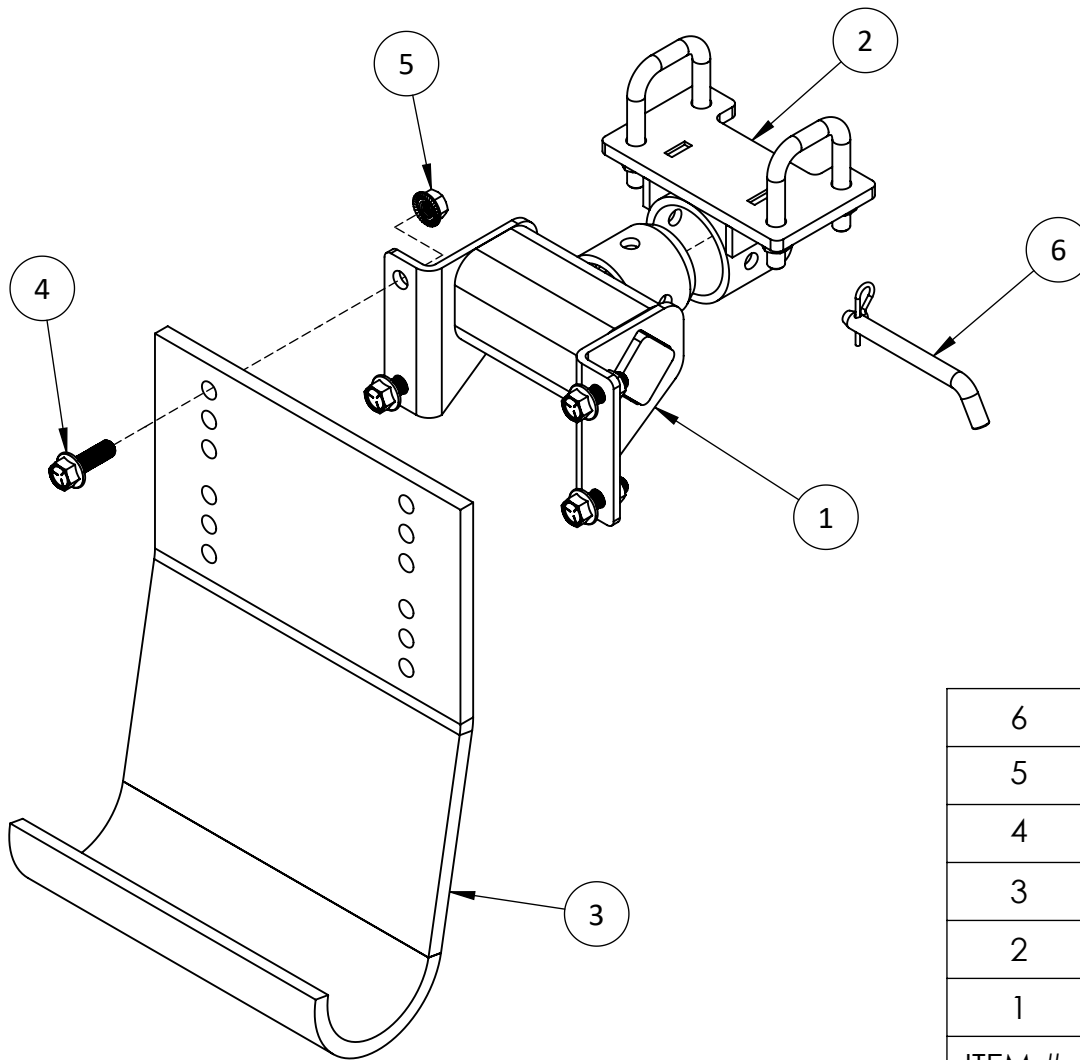
120 Eastgate Drive SE
PO Box 7
Hutchinson, MN 55350

1-800-788-6483
1-320-587-2322
1-320-587-6112 (Fax)

WWW.MAYWES.COM

G4 TOOLBAR MOUNT STALK STOMPER ASSEMBLY INSTRUCTIONS / PARTS LISTING

43111 G4 TOOLBAR MOUNT STALK STOMPER ASSEMBLY



6	01130	PIN, 1/2" X 4" BENT HITCH	1
5	00730	Nut 1/2"-13 Serrated Flange	4
4	00729	Bolt 1/2-13 X 1-1/2 Flange Head	4
3	22726	POLY SHOE	1
2	43111	HORIZONTAL TOOLBAR BRKT ASSY	1
1	42295	STALK STOMPER TORSION ASSY	1
ITEM #	PART #	DESCRIPTION	QTY