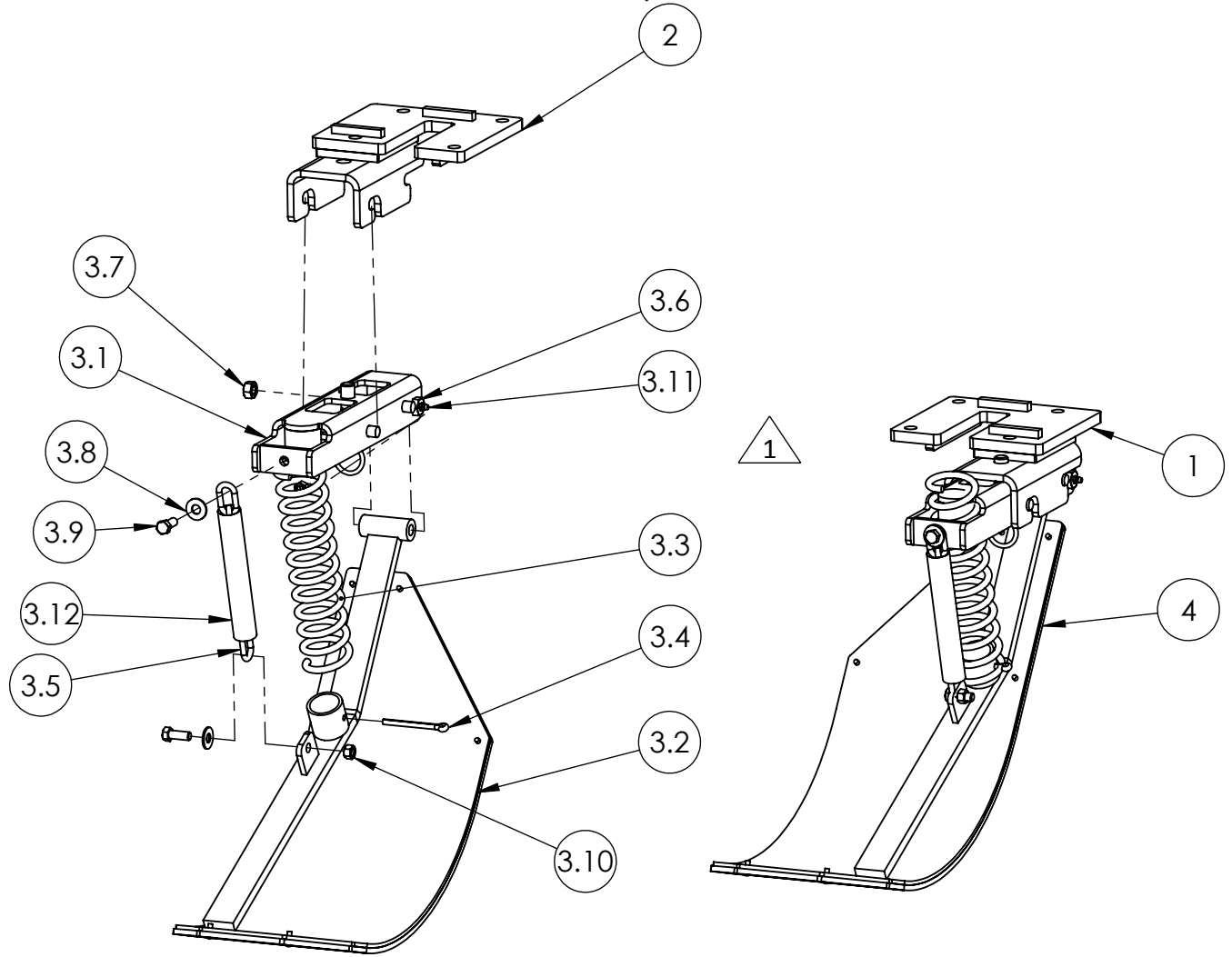


CASE IH 2200/2400/3200/3400 - NEW HOLLAND 96C/96D/98C/98D/996
QD2 ROWS 3 & 10 ON A 12 ROW HEAD WITH 20"/22" ROW SPACING
STALK STOMPER PARTS LISTING/ASSEMBLY INSTRUCTIONS



NOTES:

1 Install Self-Tapping Grease Fitting into end of Pivot Bolt
 Torque grease fitting to 65-70 inch pounds. DO NOT OVERTIGHTEN!

ITEM#	PART#	DESCRIPTION	QTY	ITEM#	PART#	DESCRIPTION	QTY
1	43028	QD2 HEADER BRACKET - OFFSET RIGHT	1	3.6	01001	BOLT, CUSTOM (GREASEABLE)	1
2	43029	QD2 HEADER BRACKET - OFFSET LEFT	1	3.7	00213	NUT, 7/16"-14 HEX TOP LOCK	1
3	43014	OFFSET LEFT SS ASSY 9"	1	3.8	00249	WASHER, 3/8" FLAT	2
3.1	43004	SHOE BRACKET ASSY	1	3.9	00104	BOLT, 3/8"-16 X 1" HEX	2
3.2	41856	OFFSET LEFT STALK STOMPER	1	3.10	00209	NUT, 3/8"-16 HEX	2
3.3	01040	SPRING	1	3.11	01009	GREASE FITTING, 1/4"-28 STRAIGHT	1
3.4	00691	PIN, 1/4" X 3" COTTER	1	3.12	01046	CHAIN SLEEVE	1
3.5	00931	CHAIN	1	4	43013	OFFSET RIGHT SS ASSY 9"	1



120 Eastgate Drive SE
 PO Box 7
 Hutchinson, MN 55350

1-800-788-6483
 1-320-587-2322
 1-320-587-6112 (Fax)

WWW.MAYWES.COM

CASE IH 2200/2400/3200/3400 - NEW HOLLAND 96C/96D/98C/98D/996
QD2 ROWS 3 & 10 ON A 12 ROW HEAD WITH 20"/22" ROW SPACING
STALK STOMPER INSTALLATION

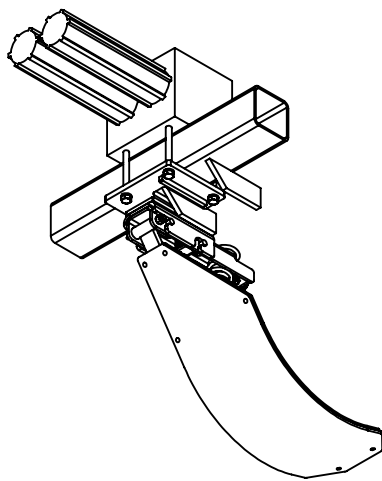
Safety Procedure:

- Park combine on level ground and engage the parking brake.
- Raise the head and lock in the upright position.
- Support all row units that stalk stompers will be installed on to ensure row units remain stationary during installation.

Installation Procedure:

- Remove the factory gearbox support brackets (Fig. 1) on row 10* and replace with Header Bracket - Offset Right (43028) and fasten reusing the factory hardware (Fig. 2).
- Lift the Offset Right Stalk Stomper Assy (43013) into mating features in Header Bracket (43028). Pull Stalk Stomper Assembly back until lock pin assembly snaps into place.
- Repeat steps for row 3* using Header Bracket - Offset Left (43029) and Offset Left Stalk Stomper (43014).

*Orientation Note (from operator's position)



(Right Offset Shown,
Left Offset is identical opposite)

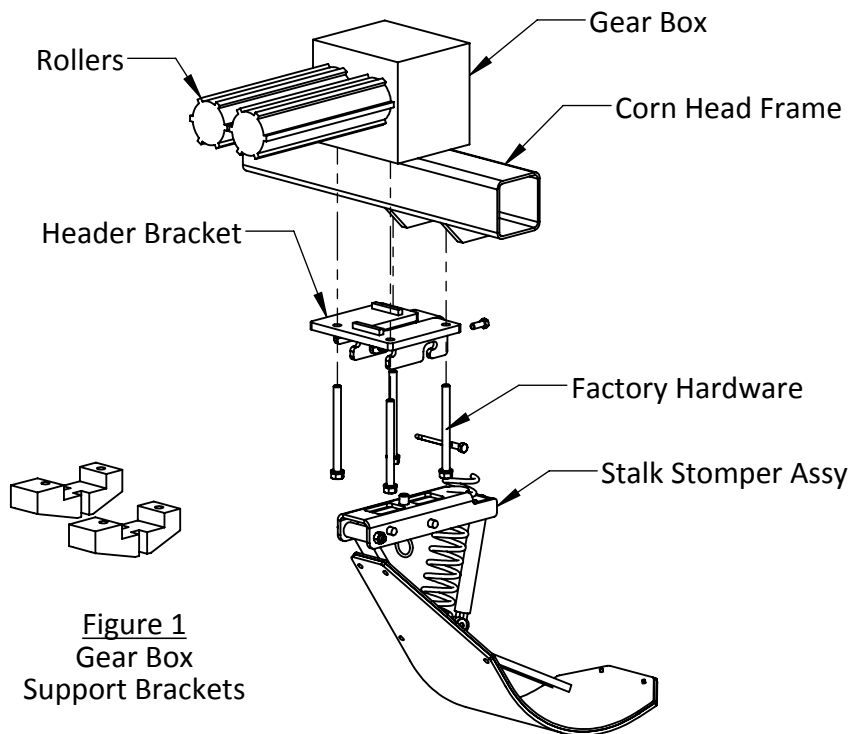
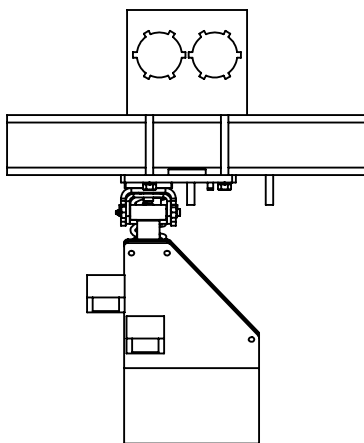


Figure 1
Gear Box
Support Brackets

Figure 2



120 Eastgate Drive SE
 PO Box 7
 Hutchinson, MN 55350

1-800-788-6483
 1-320-587-2322
 1-320-587-6112 (Fax)

WWW.MAYWES.COM

QD2 Stalk Stomper Instructions

Safety Recommendations:

Prior to installation, removal or maintenance of May Wes Stalk Stompers, please follow the safety steps listed below, in addition to all safety recommendations listed in the OEM owner's manuals.

- Park implement on level ground and lock the brakes.
- Raise the head and lock in the upright position.
- Support all row units that stalk stompers will be installed on to ensure row units stay stationary during installation (corn head row unit mount application only).

Setup/Operating Recommendations:

May Wes stalk stompers are intended to be setup/operated with minimal to no ground contact and minimal spring compression during field operation. To achieve the recommended operating setup, rotate spring to reduce or increase down pressure per application requirements. Minimizing spring preload will allow for maximum spring travel during operation. After operating position is established, adjust the chains so there is no slack when the shoe is not in contact with the ground. This will help reduce shoe damage, premature wear of the poly and accidental spring loss.

Note: As with all aftermarket product applications please maintain an awareness of the stalk stompers during operation. The head/stalk stompers should always be raised prior to backing up to prevent damage to the stalk stompers. The curved design of the shoe is intended to prevent or minimize damage if the head/stalk stompers are inadvertently left down while backing up.

Maintenance Recommendations:

Your May Wes stalk stompers should require minimal maintenance during operation. During routine equipment maintenance, grease Stalk Stomper pivot point. Periodically check the pivot bolts connecting the shoes and the mount brackets and replace when wear is present. The springs and chains should also be checked periodically for proper adjustment/operation and to ensure the cotter pins are still in place. This should be done along with other routine maintenance of the equipment.

Transport Recommendations:

If a header cart is used to transport head, stalk stomper shoes may need to be removed on rows that interfere with the header cart. Follow the Safety Recommendations listed above prior to beginning the recommended procedure listed below for transport. See page 2 for Transport Position (toolbar mount only).

Note: For ease of storage of Quick Disconnect 2 Stalk Stompers, optional Storage Brackets are available for purchase. To order Storage Brackets per pair (set of two) use part number 43020.

Storage Recommendations:

It is recommended that stalk stompers be removed prior to storing the head. Please refer to the procedures listed under Transport Recommendations for removal of Quick Disconnect 2 stalk stompers.

PLEASE VISIT WWW.MAYWES.COM FOR VIDEO INSTALLATION



120 Eastgate Drive SE
PO Box 7
Hutchinson, MN 55350

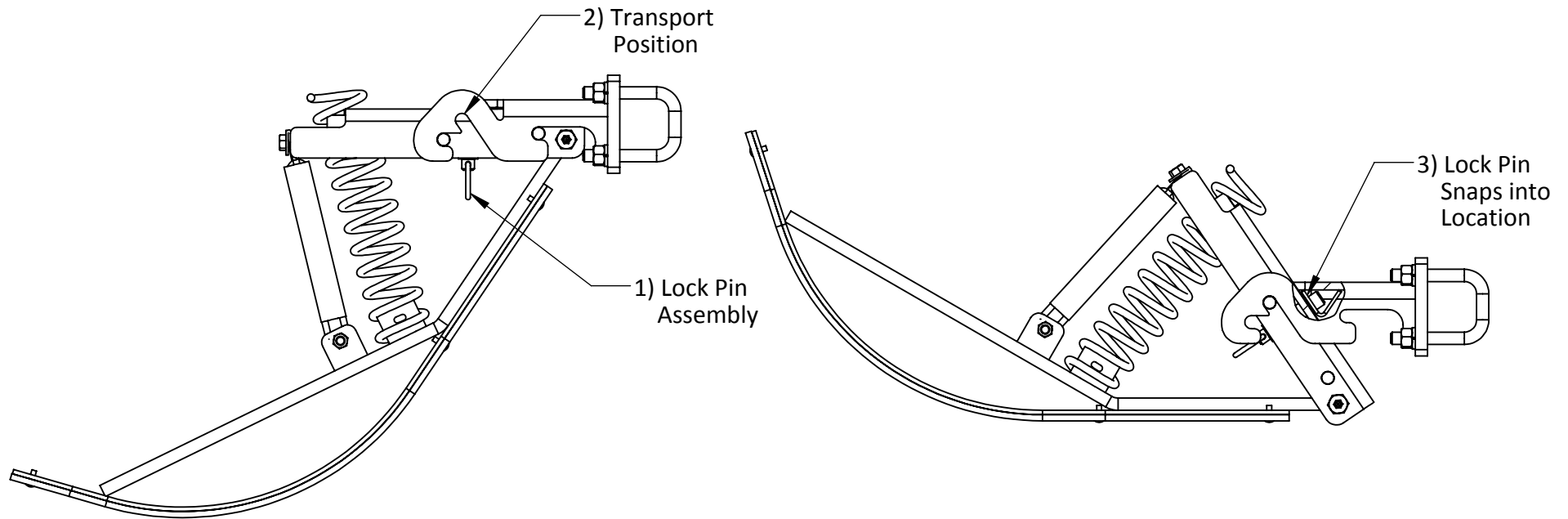
1-800-788-6483
1-320-587-2322
1-320-587-6112 (Fax)

WWW.MAYWES.COM

QD2 Stalk Stomper Instructions

Operating Position

Transporting Position



Transport Position (Toolbar Mount Only):

- 1) Pull down on Lock Pin Assembly to release Stalk Stomper Shoe
- 2) Place front mounting pin in upright position
- 3) Pull up until Lock Pin Assembly snaps into place



MAY WES
Original Poly People
A DIVISION OF PRIDE SOLUTIONS

120 Eastgate Drive SE
PO Box 7
Hutchinson, MN 55350

1-800-788-6483
1-320-587-2322
1-320-587-6112 (Fax)

WWW.MAYWES.COM