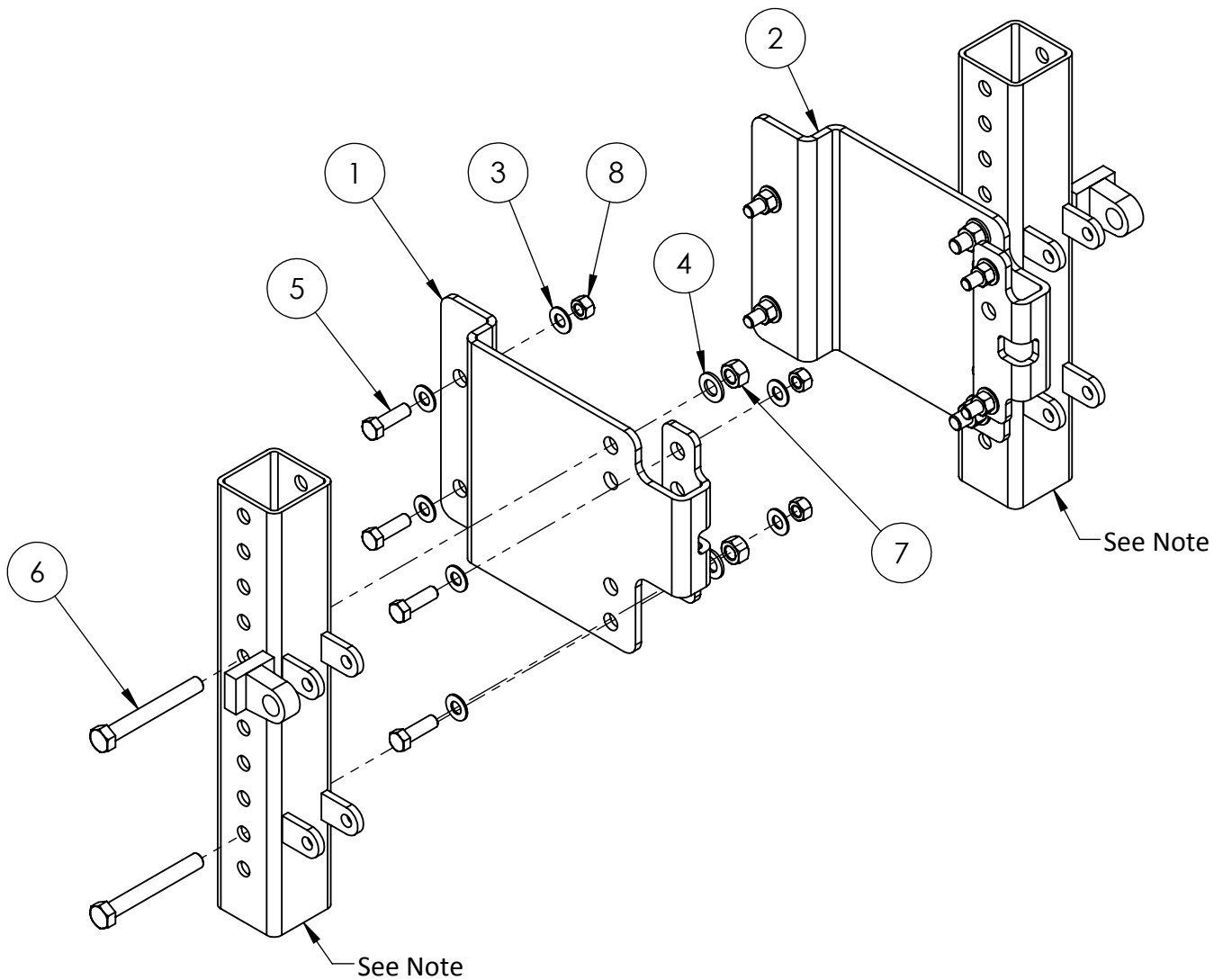


41687
CASE QUADTRAC 535
TRACTOR STALK STOMPER
MOUNT KIT



NOTE:
 -For graphical reference only. Vertical Mounts are included in the Lift Arm Assemblies.

| ITEM# | PART# | DESCRIPTION | QTY | ITEM# | PART# | DESCRIPTION | QTY |
|-------|-------|-----------------------|-----|-------|-------|------------------------|-----|
| 1 | 22257 | MOUNT PLATE (RIGHT) | 1 | 5 | 00881 | BOLT, 5/8"-11 X 2" HEX | 8 |
| 2 | 22259 | MOUNT PLATE (LEFT) | 1 | 6 | 00033 | BOLT, 3/4"-10 X 6" HEX | 4 |
| 3 | 00234 | WASHER, 5/8" FLAT SAE | 16 | 7 | 00621 | NUT, 3/4"-10 TOP LOCK | 4 |
| 4 | 00238 | WASHER, 3/4" FLAT SAE | 4 | 8 | 00197 | NUT, 5/8"-11 TOP LOCK | 8 |

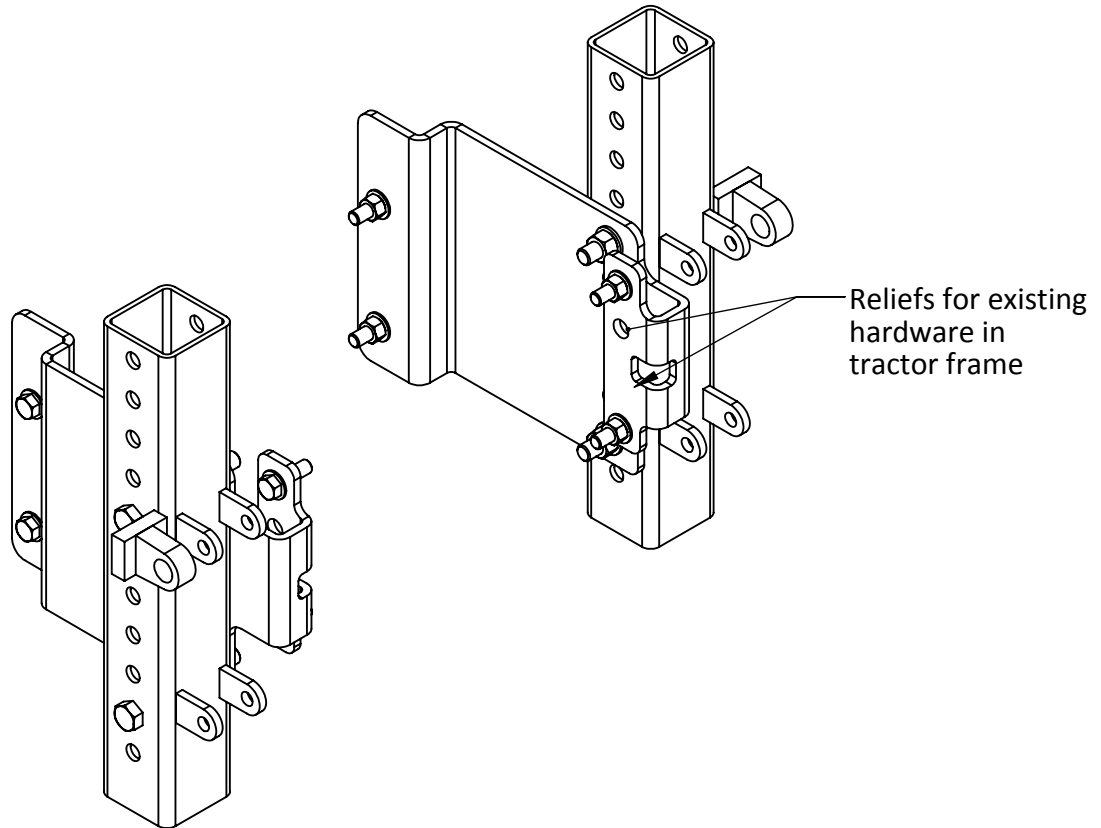


120 Eastgate Drive SE
PO Box 7
Hutchinson, MN 55350

1-800-788-6483
1-320-587-2322
1-320-587-6112 (Fax)

WWW.MAYWES.COM

41687
CASE QUADTRAC 535
TRACTOR STALK STOMPER
MOUNT KIT



Safety Procedure:

-Park tractor on level ground and engage parking brake.

Installation Procedure:

- Remove toolbox and stair from tractor.
- Hold mount bracket #22257 up to the front right side of tractor frame matching the hole pattern in the bracket to existing hole locations in tractor frame. (Existing hardware may need to be removed from matching hole locations in tractor frame)
- Attach mount bracket to tractor using supplied 5/8" hardware.
- Repeat steps 2 through 4 using mount bracket #22259 for the front left side of tractor.
- Proceed to mounting the Lift Arm Assemblies using 3/4" hardware supplied with mount kit and instructions provided with each Lift Arm Kit.



120 Eastgate Drive SE
PO Box 7
Hutchinson, MN 55350

1-800-788-6483
1-320-587-2322
1-320-587-6112 (Fax)

WWW.MAYWES.COM

Stalk Stomper Instructions

Safety Recommendations:

Prior to installation, removal or maintenance of May Wes Stalk Stompers, please follow the safety steps listed below, in addition to all safety recommendations listed in the OEM owner's manuals.

- Park implement on level ground and lock the brakes.
- Raise the head and lock in the upright position (corn head application only).
- Support all row units that stalk stompers will be installed on to ensure row units stay stationary during installation (corn head row unit mount application only).

Setup/Operating Recommendations:

May Wes stalk stompers are intended to be setup/operated with minimal to no ground contact and minimal spring compression during field operation. To achieve the recommended operating setup, the spring may need to be shortened by removing one coil (approximately one inch) at a time. Eliminating spring preload will allow for maximum spring travel during operation. After operating position is established, adjust the chains so there is no slack when the shoe is not in contact with the ground. This will help reduce shoe damage, premature wear of the poly and accidental spring loss.

Note: As with all aftermarket product applications please maintain an awareness of the stalk stompers during operation. The head/stalk stompers should always be raised prior to backing up to prevent damage to the stalk stompers. The curved design of the shoe is intended to prevent or minimize damage if the head/stalk stompers are inadvertently left down while backing up.

Maintenance Recommendations:

Your May Wes stalk stompers should require minimal maintenance during operation. During routine equipment maintenance, grease Stalk Stomper pivot point. Periodically check the pivot bolts connecting the shoes and the mount brackets and replace when wear is present. The springs and chains should also be checked periodically for proper adjustment/operation and to ensure the cotter pins are still in place. This should be done along with other routine maintenance of the equipment.

Transport Recommendations:

If a header cart is used to transport head, stalk stomper shoes may need to be removed on rows that interfere with the header cart. Follow the Safety Recommendations listed above prior to beginning the recommended procedure for removing/installing Standard Mount or Quick Disconnect listed below.

- Standard Mount:**
- 1) Unbolt shoe from chain.
 - 2) Remove cotter pin and spring.
 - 3) Unbolt shoe from mount bracket.
- Assemble in reverse order.

- Quick Disconnect:**
- 1) Remove locking pin from bent pin.
 - 2) Remove bent pin from the stalk stomper assembly.
 - 3) Slide stalk stomper assembly forward removing it from the mount bracket.
- Assemble in reverse order.

Note: For ease of storage of Quick Disconnect stalk stompers, optional Storage Brackets are available for purchase. To order Storage Brackets per pair (set of two) use part number 41747.

Storage Recommendations:

It is recommended that stalk stompers be removed prior to storing the head. Please refer to the procedures listed under Transport Recommendations for removal of both Standard and Quick Disconnect stalk stompers.

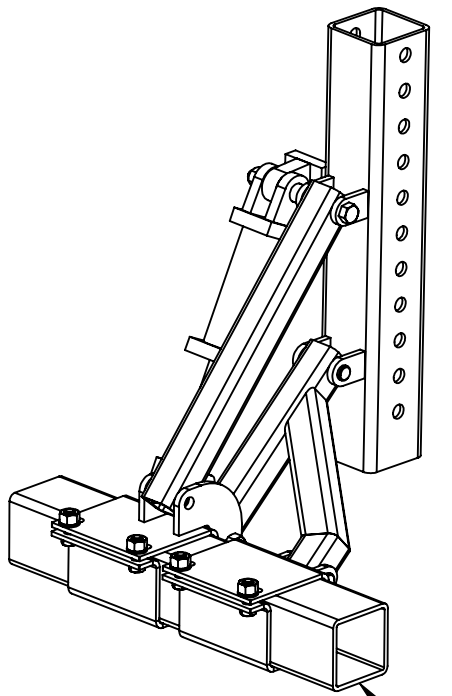


120 Eastgate Drive SE
PO Box 7
Hutchinson, MN 55350

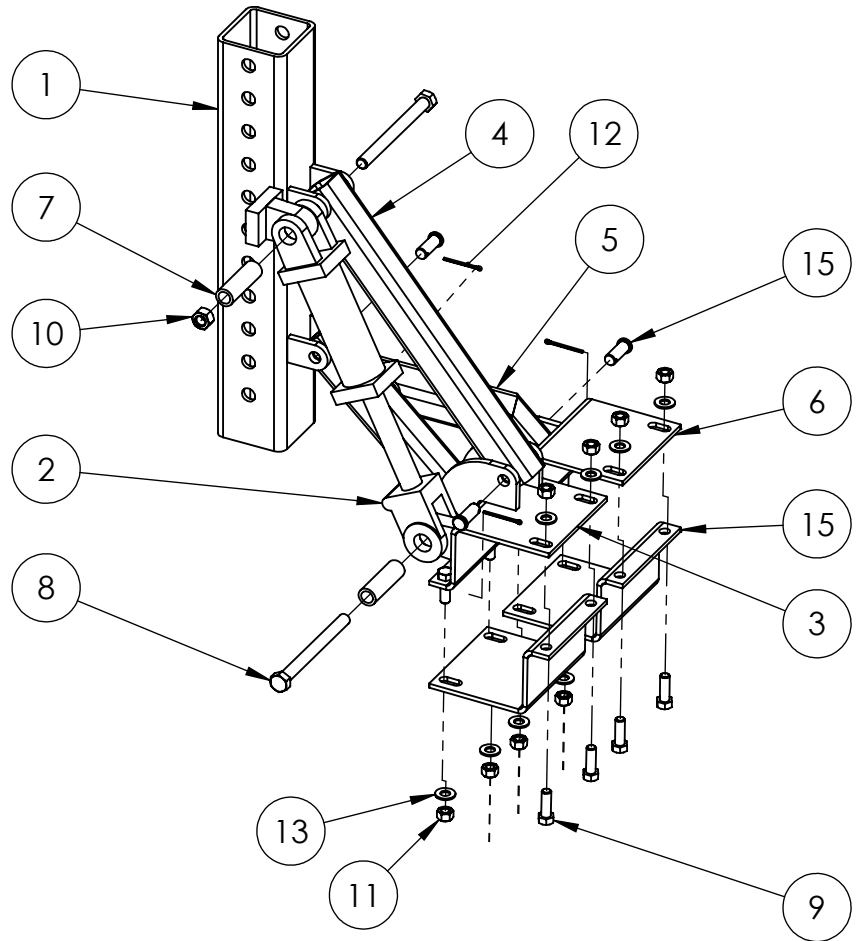
1-800-788-6483
1-320-587-2322
1-320-587-6112 (Fax)

WWW.MAYWES.COM

41688
LIFT ARM ASSY (RIGHT)
 TRACTOR STALK STOMPER
 PARTS LISTING



4" x 4" x 1/4" (thick) SQ Tube
 (Reference only, not included in #41688)



NOTES:

- To order a complete stalk stomper, use part number #41688
- To order individual sevice items, select item number from the illustration above and cross reference the parts list below for the part number and description.

| ITEM# | PART# | DESCRIPTION | QTY | ITEM# | PART# | DESCRIPTION | QTY |
|-------|-------|------------------------|-----|-------|-------|------------------------------|-----|
| 1 | 41690 | VERTICAL MOUNT | 1 | 9 | 00135 | BOLT, 1/2"-13 X 1-1/2" HEX | 8 |
| 2 | 00961 | HYDRAULIC CYLINDER | 1 | 10 | 00197 | NUT, 5/8"-11 TOP LOCK | 2 |
| 3 | 41693 | LARGE BRACKET | 1 | 11 | 00216 | NUT, 1/2"-13 TOP LOCK | 8 |
| 4 | 41696 | UPPER ARM | 1 | 12 | 00964 | COTTER PIN, 1/8" X 2" LG | 3 |
| 5 | 41692 | LOWER CONNECTOR ARM | 1 | 13 | 00253 | WASHER, 1/2" FLAT SAE | 8 |
| 6 | 41694 | SMALL BRACKET | 1 | 15 | 22264 | CLAMP | 2 |
| 7 | 22255 | SLEEVE BUSHING | 2 | 15 | 00964 | CLEVIS PIN, 5/8" X 3-1/2" LG | 3 |
| 8 | 00962 | BOLT, 5/8"-11 X 7" HEX | 2 | | | | |



120 Eastgate Drive SE
PO Box 7
Hutchinson, MN 55350

1-800-788-6483
1-320-587-2322
1-320-587-6112 (Fax)

WWW.MAYWES.COM

41688
LIFT ARM ASSY (RIGHT)
TRACTOR STALK STOMPER
INSTALLATION

Safety Procedure:

-Park Tractor on level ground and engage the parking brake

Installation Procedure:

-Attach Vertical Mount (#41690) to mounting bracket* on tractor with two (2) 3/4" Grade 5 bolts**, two (2) flat washers**, and two (2) 3/4" locking nuts**. Minimum recommended bolt spacing on vertical mount is 6" (two holes between bolts).

Note:

-Lift Arm Assembly must be mounted to allow for 2" of ground clearance to the bottom of the Stalk Stomper shoe when the entire assembly is in the operating (down) position (see figure 1). Also to allow for a minimum of 12" of clearance between the tractor tire/track and the back edge of the Stalk Stomper shoe when the ntire assembly is in transport (up) position (see figure 2).

Figure 1

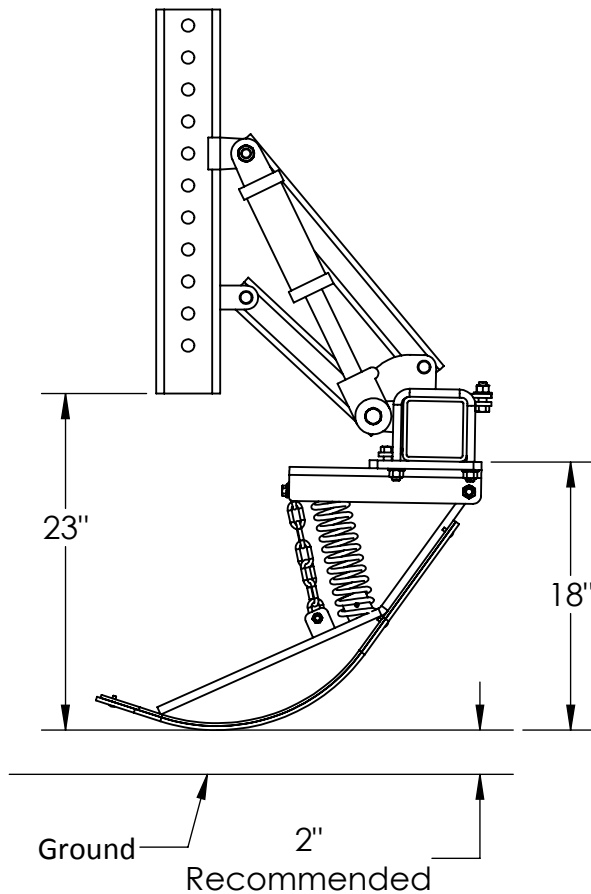
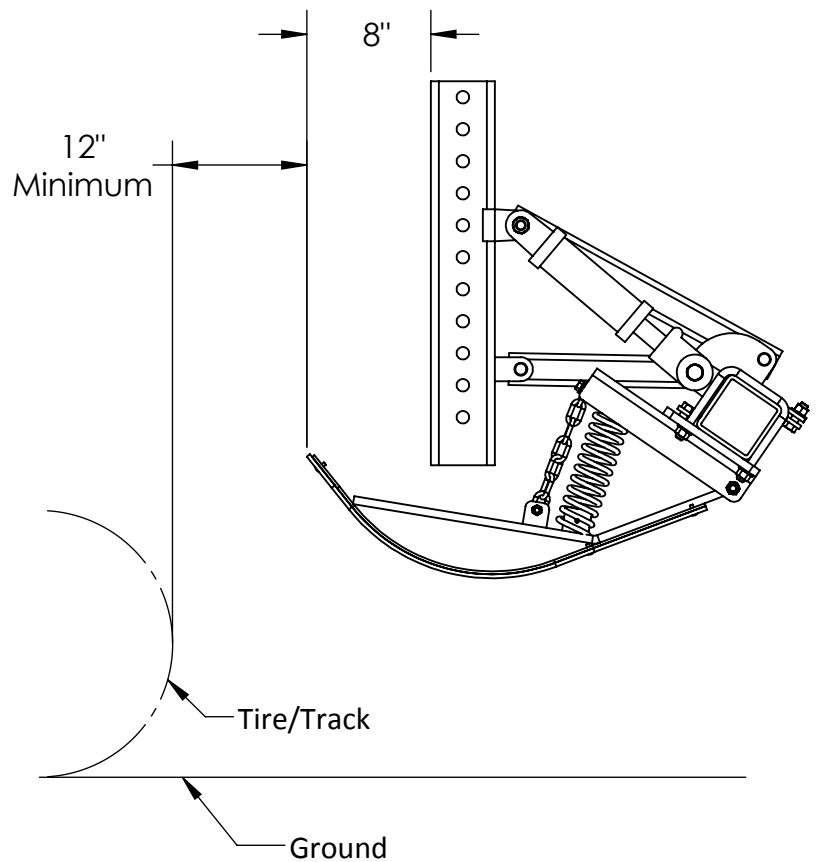


Figure 2



* Tractor mounting bracket sold separately or supplied by the customer.

** 3/4" Bolts, 3/4" Flat Washers & 3/4" Locking Nuts are recommended hardware and are not supplied with Lift Arm Assembly

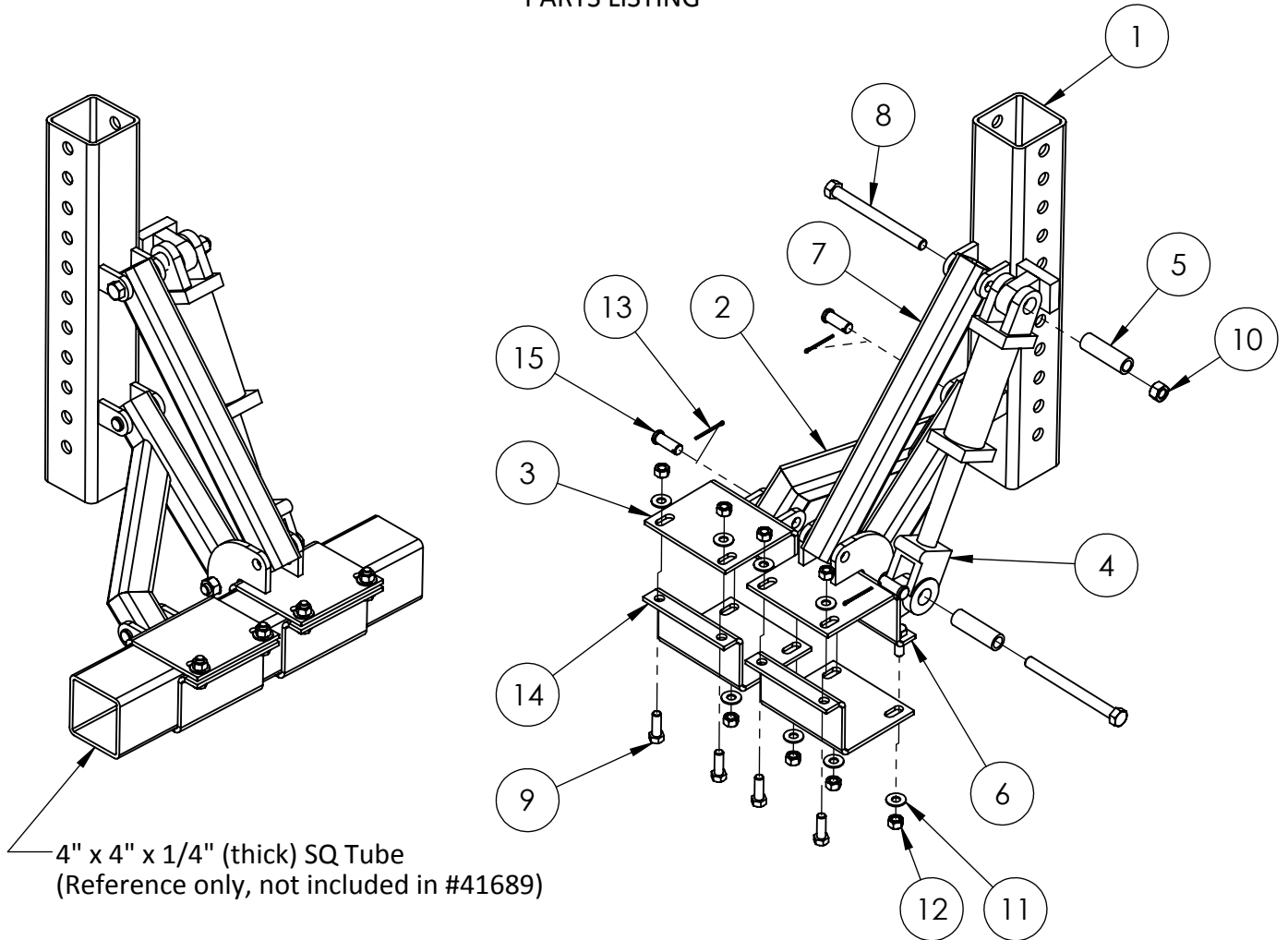


120 Eastgate Drive SE
PO Box 7
Hutchinson, MN 55350

1-800-788-6483
1-320-587-2322
1-320-587-6112 (Fax)

WWW.MAYWES.COM

41689
LIFT ARM ASSY (LEFT)
TRACTOR STALK STOMPER
PARTS LISTING



NOTES:

- To order a complete stalk stomper, use part number #41689
- To order individual service items, select item number from the illustration above and cross reference the parts list below for the part number and description.

| ITEM# | PART# | DESCRIPTION | QTY | ITEM# | PART# | DESCRIPTION | QTY |
|-------|-------|------------------------|-----|-------|-------|------------------------------|-----|
| 1 | 41691 | VERTICAL MOUNT | 1 | 9 | 00135 | BOLT, 1/2"-13 X 1-1/2" HEX | 8 |
| 2 | 41692 | LOWER CONNECTOR ARM | 1 | 10 | 00197 | NUT, 5/8"-11 TOP LOCK | 2 |
| 3 | 41694 | SMALL BRACKET | 1 | 11 | 00253 | WASHER, 1/2" FLAT SAE | 8 |
| 4 | 00961 | HYDRAULIC CYLINDER | 1 | 12 | 00216 | NUT, 1/2"-13 TOP LOCK | 8 |
| 5 | 22255 | SLEEVE BUSHING | 2 | 13 | 00964 | COTTER PIN, 1/8" X 2" LG | 3 |
| 6 | 41695 | LARGE BRACKET | 1 | 14 | 22264 | CLAMP | 2 |
| 7 | 41696 | UPPER ARM | 1 | 15 | 00964 | CLEVIS PIN, 5/8" X 3-1/2" LG | 3 |
| 8 | 00962 | BOLT, 5/8"-11 X 7" HEX | 2 | | | | |



120 Eastgate Drive SE
PO Box 7
Hutchinson, MN 55350

1-800-788-6483
1-320-587-2322
1-320-587-6112 (Fax)

WWW.MAYWES.COM

41689
LIFT ARM ASSY (LEFT)
TRACTOR STALK STOMPER
INSTALLATION

Safety Procedure:

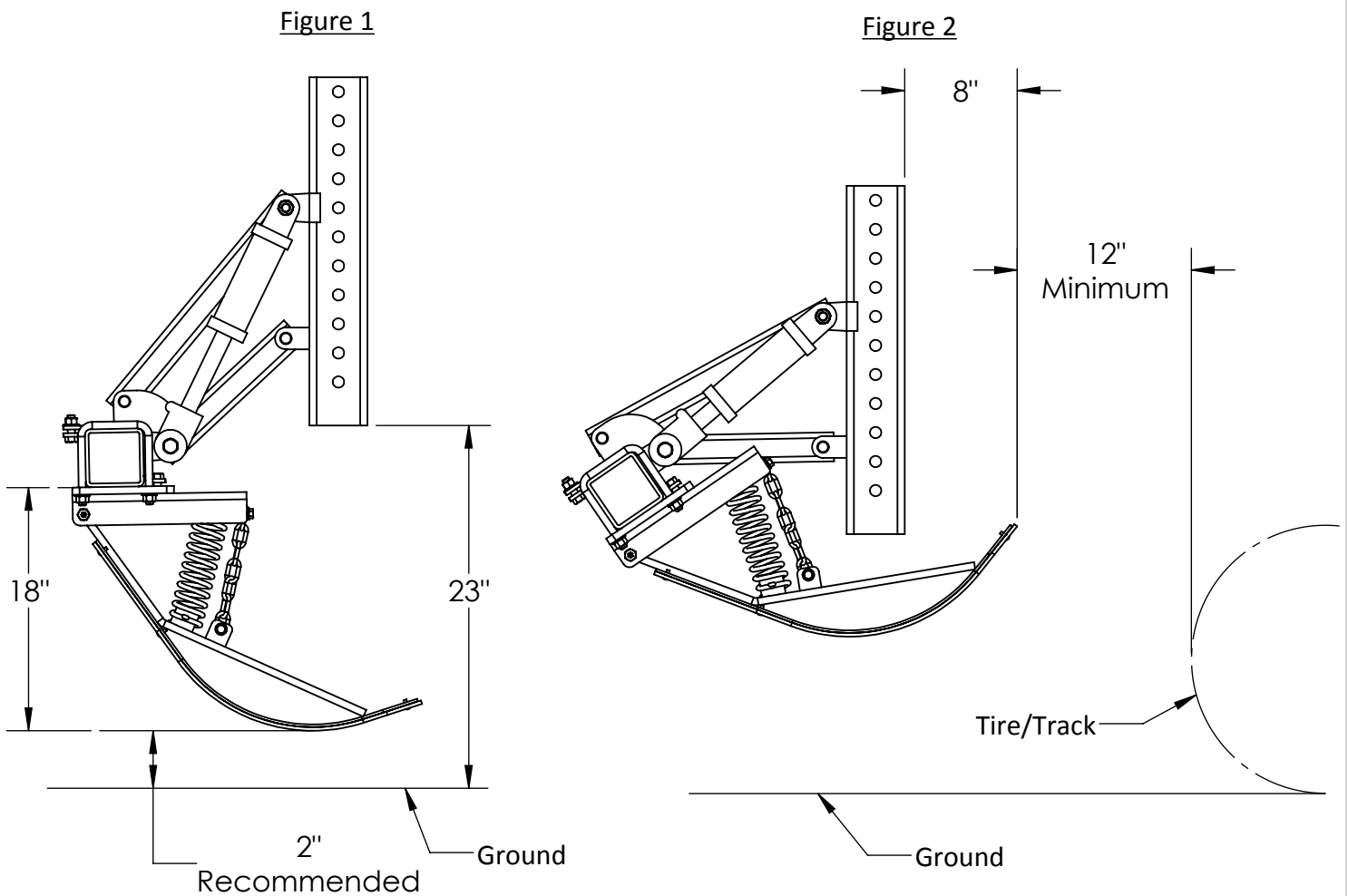
-Park Tractor on level ground and engage the parking brake

Installation Procedure:

-Attach Vertical Mount (#41691) to mounting bracket* on tractor with two (2) 3/4" Grade 5 bolts**, two (2) flat washers**, and two (2) 3/4" locking nuts**. Minimum recommended bolt spacing on vertical mount is 6" (two holes between bolts).

Note:

-Lift Arm Assembly must be mounted to allow for 2" of ground clearance to the bottom of the Stalk Stomper shoe when the entire assembly is in the operating (down) position (see figure 1). Also to allow for a minimum of 12" of clearance between the tractor tire/track and the back edge of the Stalk Stomper shoe when the ntire assembly is in transport (up) position (see figure 2).



* Tractor mounting bracket sold separately or supplied by the customer.

** 3/4" Bolts, 3/4" Flat Washers & 3/4" Locking Nuts are recommended hardware and are not supplied with Lift Arm Assembly

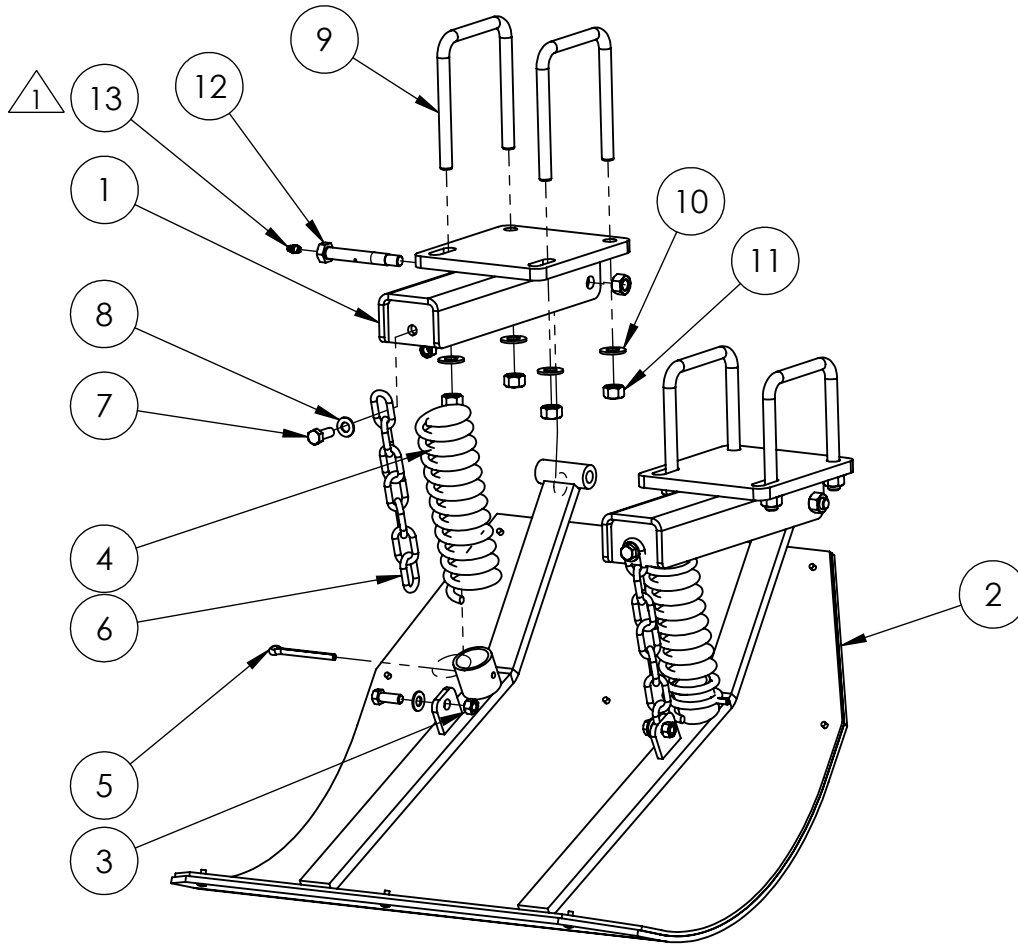


120 Eastgate Drive SE
PO Box 7
Hutchinson, MN 55350

1-800-788-6483
1-320-587-2322
1-320-587-6112 (Fax)

WWW.MAYWES.COM

41724
24" STALK STOMPER ASSEMBLY
 TRACTOR STALK STOMPER
 PARTS LISTING



Note:

① Install Self-Tapping Grease Fitting into end of Pivot Bolt.
 Torque grease fitting to 65-70 inch pounds. DO NOT OVERTIGHTEN!

| ITEM# | PART# | DESCRIPTION | QTY | ITEM# | PART# | DESCRIPTION | QTY |
|-------|-------|------------------------|-----|-------|-------|----------------------------------|-----|
| 1 | 40986 | CONNECTOR BRACKET | 2 | 8 | 00249 | WASHER, 3/8" FLAT SAE | 4 |
| 2 | 41725 | 24" SS SHOE W/POLY | 1 | 9 | 00965 | U-BOLT 1/2-13 | 4 |
| 3 | 00211 | NUT, 3/8"-16 TOP LOCK | 4 | 10 | 00253 | WASHER, 1/2" FLAT SAE | 8 |
| 4 | 40649 | SPRING | 2 | 11 | 00216 | NUT, 1/2"-13 TOP LOCK | 10 |
| 5 | 00691 | PIN, 1/4" X 3" COTTER | 2 | 12 | 01001 | BOLT, CUSTOM (GREASEABLE) | 2 |
| 6 | 00931 | CHAIN | 2 | 13 | 01009 | GREASE FITTING, 1/4"-28 STRAIGHT | 2 |
| 7 | 00104 | BOLT, 3/8"-16 X 1" HEX | 4 | | | | |



120 Eastgate Drive SE
PO Box 7
Hutchinson, MN 55350

1-800-788-6483
1-320-587-2322
1-320-587-6112 (Fax)

WWW.MAYWES.COM

41724
24" STALK STOMPER ASSEMBLY
TRACTOR STALK STOMPER
PARTS LISTING

Safety Procedure:

-Park tractor on level ground and engage parking brake.

Installation Procedure:

-At assembly, set chain tension to allow for 18" operating position as shown below in Figure 1.
-Mount Stalk Stomper Assy(s)* to the 4" x 4" x 1/4" (sidewall) Toolbar* (purchased or customer supplied) as shown below in Figure 2. Position Stalk Stomper Assy(s)* centered with tractor tires/tracks.

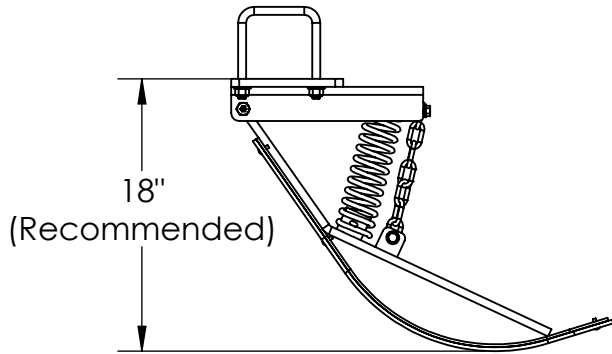


Figure 1

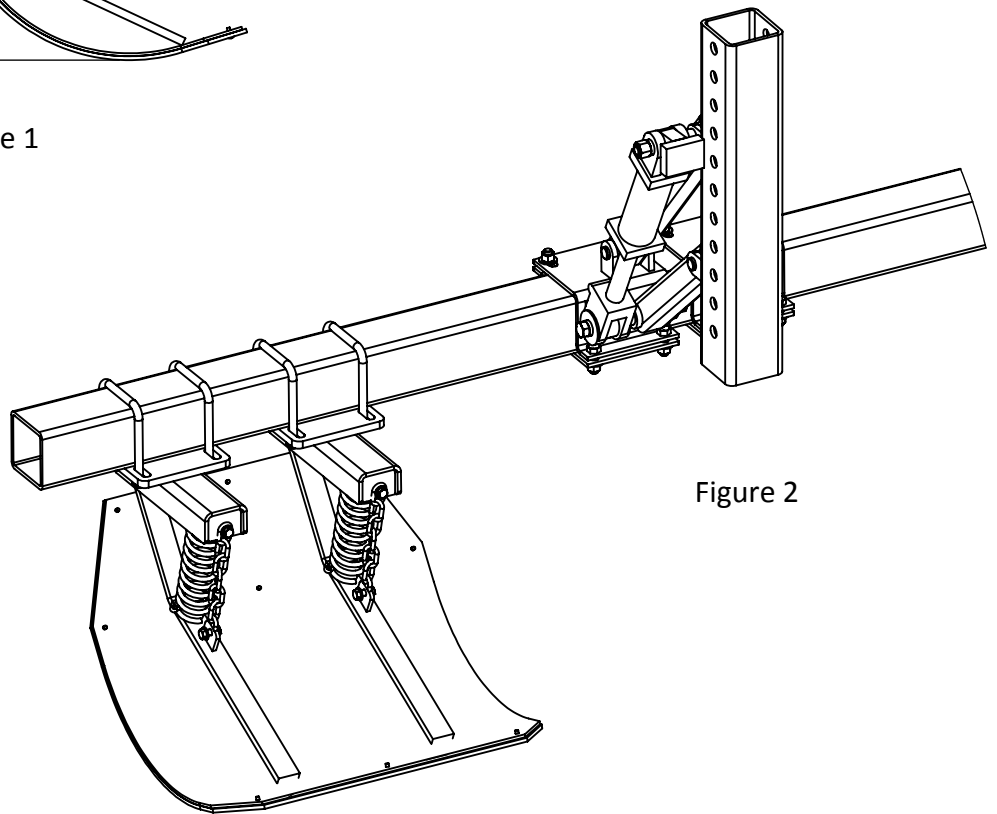


Figure 2

* Number of Stalk Stomper Assemblies and length of Toolbar will vary depending on tractor configuration.



120 Eastgate Drive SE
PO Box 7
Hutchinson, MN 55350

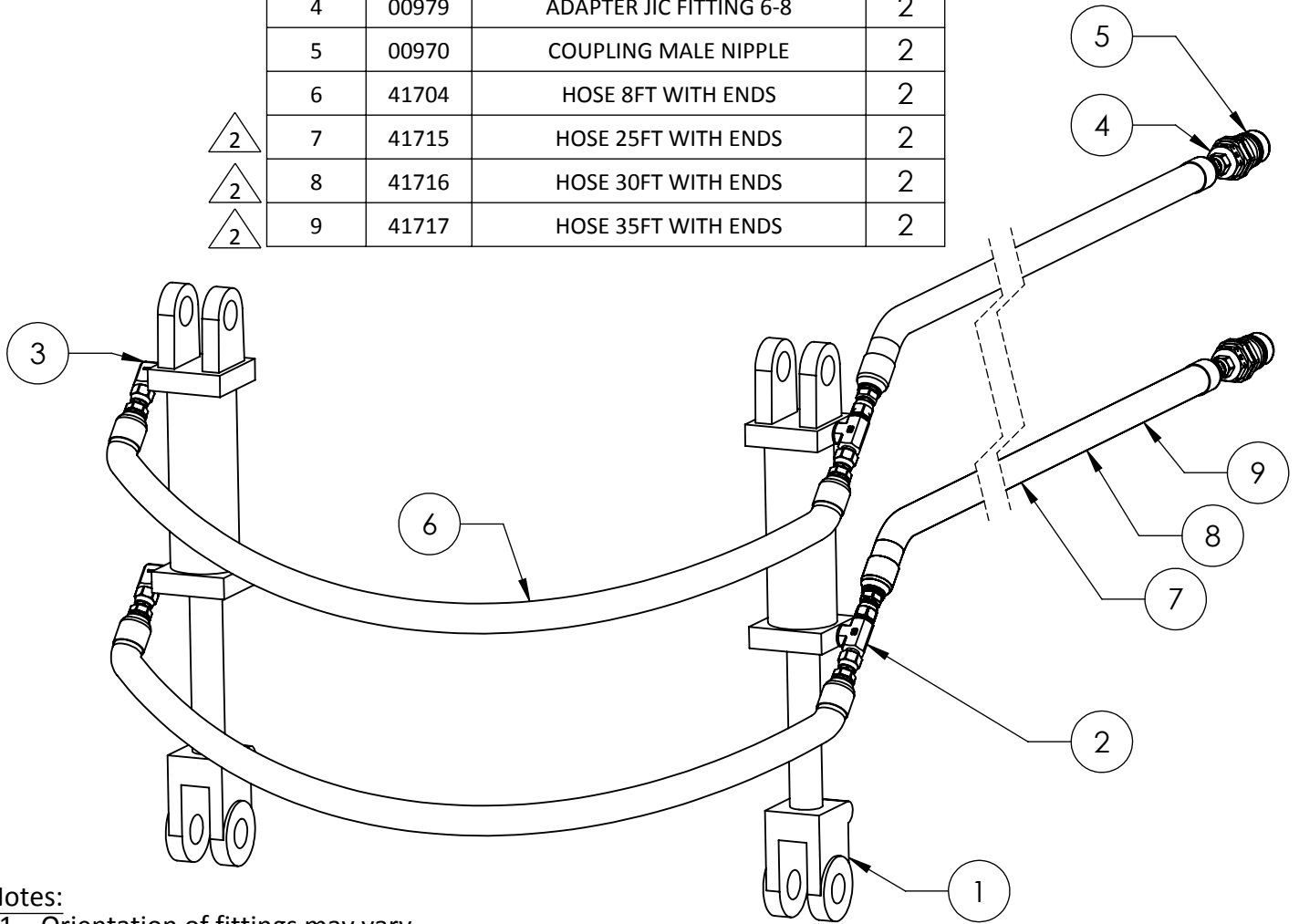
1-800-788-6483
1-320-587-2322
1-320-587-6112 (Fax)

WWW.MAYWES.COM

Tractor Stalk Stomper Hydraulic Schematic

| ITEM# | PART# | DESCRIPTION | QTY |
|-------|-------|-------------------------|-----|
| 1 | 00961 | HYDRAULIC CYLINDER | 2 |
| 2 | 00977 | TEE JIC FITTING 6-6-8 | 2 |
| 3 | 00978 | ELBOW JIC FITTING 6-8 | 2 |
| 4 | 00979 | ADAPTER JIC FITTING 6-8 | 2 |
| 5 | 00970 | COUPLING MALE NIPPLE | 2 |
| 6 | 41704 | HOSE 8FT WITH ENDS | 2 |
| 7 | 41715 | HOSE 25FT WITH ENDS | 2 |
| 8 | 41716 | HOSE 30FT WITH ENDS | 2 |
| 9 | 41717 | HOSE 35FT WITH ENDS | 2 |

△ 2
△ 2
△ 2



Notes:

1. Orientation of fittings may vary.

△ 2 Length of Hose will vary depending upon kit ordered.

3. Connection Options:

Option #1 (Recommended):

Connect hydraulics into an open remote on the tractor.
This allows for independent control and operation of the assembly in "float".

Option #2:

Connect hydraulics into an existing implement line allowing the Tractor Stalk Stomper Assembly to raise and lower with the implement.
(Additional fittings required, but not included)



**120 Eastgate Drive SE
PO Box 7
Hutchinson, MN 55350**

**1-800-788-6483
1-320-587-2322
1-320-587-6112 (Fax)**

WWW.MAYWES.COM